

# Cameras

The Newsletter of the NIH R&W Camera Club, Bethesda, MD . . . Vol. 50 (2); February 2015

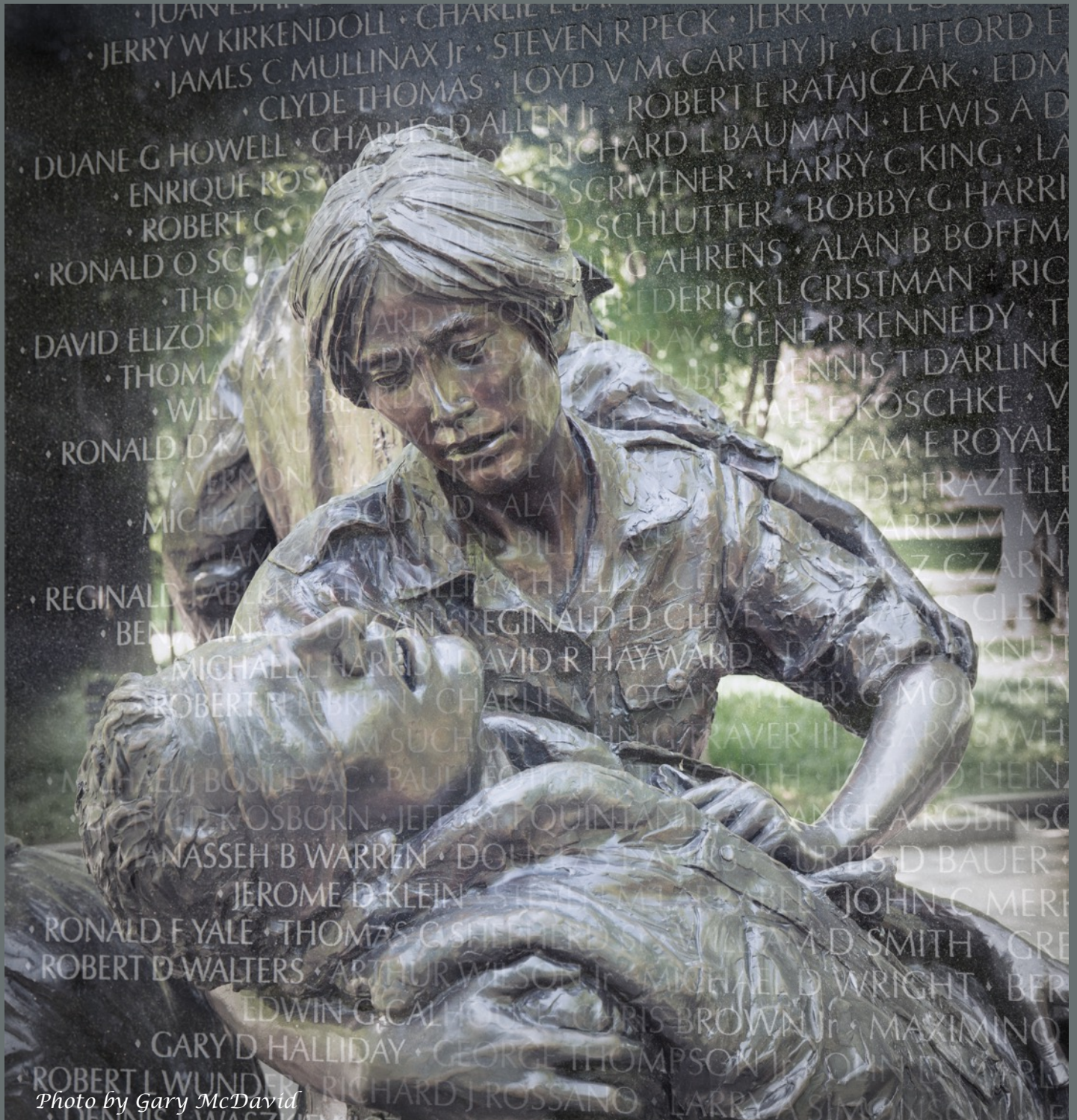


Photo by Gary McDavid

February's Competition - Cemeteries

# February's Judge: Gary Anthes

By: Suzanne Taylor Dater

Gary Anthes' photographs have received awards in group and solo exhibitions and have been featured in magazines and newspapers in the Washington DC area. He is a member of the Middle Street Gallery in Sperryville, Virginia, as well as a reporter and writer for *Communications of the ACM*, *Computerworld*, *Washington Business Journal* and *USA Today*.

He specializes in photography of architectural subjects and natural areas, and therefore is especially well suited to judge the topic of

"Cemeteries" at the NIH Camera Club competition on February 10.

Gary puts it well when he states that his view is "to avoid bringing any preconceived style or vision to photographs...The most satisfying results come when an image is rendered realistically but simply, with non-essential elements excluded where possible...It is a combination of simplicity and realism that makes a photograph worthy of appreciation over many years."



# PSA Rep Rap

By: Dick Sprott



## 2015 PSA Annual Conference

The 77th PSA Conference has an exciting lineup of photo tours, workshops, programs, featured speakers, and social activities. The conference will take place at Yellowstone National Park:

**Sunday, September 27  
through Saturday, October 3, 2015**

**CONFERENCE HOTEL:  
Holiday Inn West Yellowstone  
315 Yellowstone Avenue, West**

[www.psa-photo.org/index.php?2015-psa-conference](http://www.psa-photo.org/index.php?2015-psa-conference)



---

## REMEMBER

---

New Rules

Images for competition as of January 2015 are limited to

**TWO** images per category

Categories:

- Novice or Advanced Digital,
- Novice or Advanced Color Prints
- Novice or Advanced Monochrome Prints

# Welcome Dale Lewis

By: Morris Pelham



Dale joined the NIHCC in December, 2014 and came to his first club meeting in January, 2015 with several prints to enter in the competition. One of them caught my eye: a closeup of President Obama. The obvious question was "How did he get so close?"

He and his family went to the White House Easter Egg Hunt in April, 2012, went thru the usual security, and onto the South Lawn. They were in the 9 to 11 am time slot. President Obama came out, walked down the rope line on the side with the children while all the parents on the other side of the rope line used their cameras.

Dale used his Canon T4i with Canon 75-300mm lens, stored his photos in JPEG, processed them through Canon supplied DPP software. He changed exposure and tone, then converted the image to B&W. He printed the image on his Canon printer at home.

He had quite an exciting experience at the White House and we are glad he could share it with us.

**Welcome to the club, Dale Lewis.**



# The NIH Camera Club Website Explained

By: Emma Beatty Howells

The club's website is now active! If you haven't explored it yet please do so at either: [www.cameraclub.com](http://www.cameraclub.com) or [www.cameraclub.org](http://www.cameraclub.org). Both links lead to exactly the same site, so it really doesn't matter which one you use to access the site. Pick your favorite ending and use that one!

The front page is shown below:



[WELCOME!](#)

[ACTIVITIES](#)

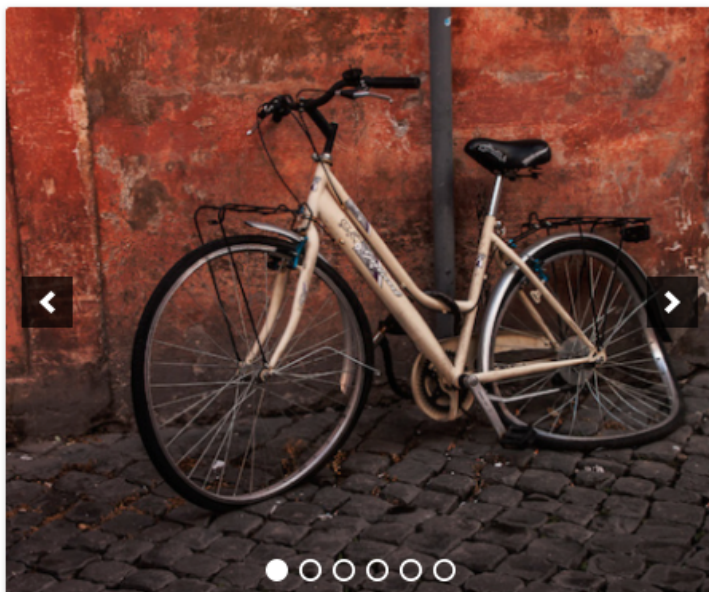
[PHOTO GALLERIES](#)

[NEWSLETTERS](#)

[MEMBERS AREA](#)

## Welcome!

Welcome to the NIH Camera Club – a friendly, active club.



Our mission is to encourage knowledge, skills and enjoyment of photography through meetings, classes, lectures and demonstrations encompassing all phases of photography.

### NEWS

[Entries for Open Meeting](#)

[January's Newsletter](#)

[December's Newsletter](#)

### EVENTS

[Travel Show: Eastern Caribbean](#)

01/27/2015

[Competition Night: Cemeteries](#)

02/10/2015

[Travel Show: Southeast Asia](#)

02/17/2015

[Education Night: Images from the Channel Islands and Brittany](#)

02/24/2015

[Competition Night: Wide Angle Photography](#)

*Website cont.*

From here, you can access the following, via drop-down menus or directly through links on the navigation or side bar with **News** and **Events**.

- ❖ **Welcome** front page, information about the club and details on how to become a member;
- ❖ Club **activities**, the calendar of events, details about club meetings, other activities and locations;
- ❖ **Photo galleries** of previous competitions and websites of club members;
- ❖ The latest **newsletters**;
- ❖ The **members only area**.

The members only area allows access to further details about the club and competitions, other useful information plus all available previous newsletters. We strongly encourage you to sign up for access as you will need a login to enter competitions and add photos to galleries.

To request access to the members only area you will need to fill in the form found by clicking on <Registration> from the <Members Area> drop-down menu.

The NIH CAMERA CLUB

WELCOME!   ACTIVITIES   PHOTO GALLERIES   NEWSLETTERS   **MEMBERS AREA**

### Registration

#### New User Registration

Choose a Username\*

First Name\*

Last Name\*

Address 1

Address 2

COMPETITION TOPICS 2014-2015

COMPETITION RULES

REGULAR CLUB COMPETITION:  
IMAGE SUBMISSION

COMMITTEES

BOARD MEMBERS

BY-LAWS

HINTS, TIPS AND LINKS

ARCHIVE

LOGIN

**REGISTRATION**

SHIRLEY DUNN  
01/20/2015

# Photo Contest

By: Linda Eisenstadt



*The 24th Annual Amateur Photography Contest*

## PART OF THE KEEP MONTGOMERY COUNTY BEAUTIFUL CONTEST.

Last year, many NIH Camera Club members entered the contest and four received ribbons. For at least two of those members, it was their first time submitting photographs. Beth Koller was instrumental in encouraging club members to submit their photographs. I was one of those that entered for the first time.

Now it's your turn! The 2015 Annual Amateur Photography competition hasn't been announced yet, but there's no time like the present to begin taking photographs of Montgomery County locations and its residents.

The contest is only open to residents of Montgomery County. You may enter only one (1) photograph. Photographs are judged on effective composition, originality, interest, technique and relevance of the subject matter.

Here are the six categories:

### Montgomery County...

**By Day:** Photos taken outdoors during the day that depict something fun, beautiful or exciting during daylight hours.

**Landmarks:** Photos taken outdoors of a natural or manmade commonly recognized landmark or scene.

**By Night:** Photos taken outdoors that depict something fun, beautiful or exciting during nighttime hours.

**Her People:** Photos taken of one or more persons involved in County activities, close-up or distant, showing leisure activity, productivity, or community service.

**Persons At Work:** Photos taken of one or more persons at work, contributing to the livability and splendor of our County.

**Youth (optional):** Only open to residents under 18.

Follow this link to the 23<sup>rd</sup> Annual Amateur Photography results, award ceremony and slide show: <http://www.montgomerycountymd.gov/dot-dir/KMCB/BAC2014.html>

*Keep your eye out for the announcement of the 24<sup>th</sup> competition. What will YOU ENTER?*



# January Competition Winners "Open"

Member	Level	Category	Title	Place
Pleeter, Saul	Adv	B&W	Sisters	1
Collyer, Stan	Adv	B&W	Simple Graveyard	2
Turner, Jim	Adv	B&W	Silk Mill Gears	3
Lewis, Dale	Adv	B&W	Copenhagen Botanical Garden	H
McDavid, Gary	Nov	B&W	Last Judgement	1
Altman, Beth	Nov	B&W	Fire Escape	2
Altman, Beth	Nov	B&W	Squares & Stones	3
McDavid, Gary	Nov	B&W	Jefferson Memorial	H
Norvell, John	Adv	Color	Young Cowboy	1
Lea, George	Adv	Color	Crossing the Lake	2
Pleeter, Saul	Adv	Color	Iceland Ponies	3
Collyer, Stan	Adv	Color	Fells Point Fireworks	H
Turner, Jim	Adv	Color	Simplified Sunflower	H
McDavid, Gary	Nov	Color	1948 Packard	1
Wolpert, Ira	Nov	Color	Spaceship Building	2
Eisenstadt, Linda	Nov	Color	Love	3
Norvell, Kay	Nov	Color	Giraffe Necking	H
McDavid, Gary	Nov	Color	Lions at Dusk	H
Kruppa, Lisa	Nov	Color	Eggs & Flour	H
Moss, Shaun	Adv	Digital	Black Valley	1
Koller, Beth	Adv	Digital	Organ Pipe 2	2
Turner, Jim	Adv	Digital	Glowing Rose	3
Norvell, John	Adv	Digital	Roundup	H
Ple, Jean-Pierre	Adv	Digital	OC Fishing Pier	H
Bodurka, Gosia	Adv	Digital	Butterfly	H
Lewis, Ruthann	Nov	Digital	Nobody Knows the Trouble I've Seen	1
Lewis, Ruthann	Nov	Digital	In Sync	2
Kruppa, Lisa	Nov	Digital	Reflections	3
Park, Grace	Nov	Digital	Reflection of Mercy	H
McDavid, Gary	Nov	Digital	Lincoln Memorial	H
Raab, Fran	Nov	Digital	Here it Comes	H
Frumento, Elisa	Nov	Digital	Multi-Colored Sneakers	H
Bedoret, Christine	Nov	Digital	Valiant Horseman	H
Allin, Vickie	Nov	Digital	Lotus Swirl	H
Palangat, Murali	Nov	Digital	Cactus	H





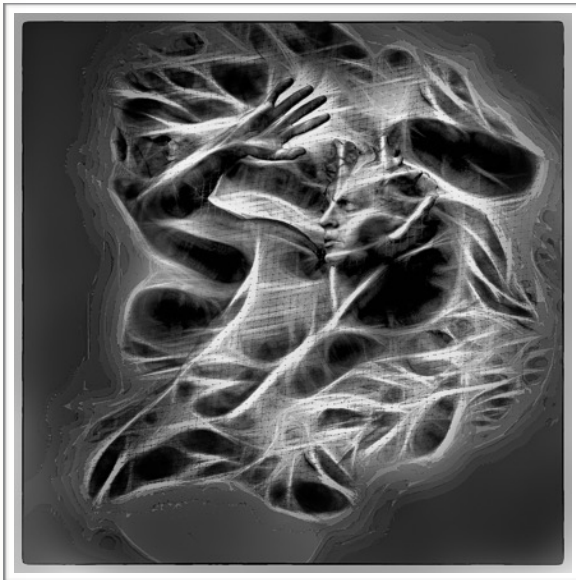
*2nd Place Advanced B&W Print*  
**"Simple Graveyard" by Stan Collyer**

This photo of a small cemetery in western Iceland was shot handheld. I used Topaz Simplify to remove some detail in the grass, and then used a layer mask in Photoshop to restore detail in the gravestones. 31mm, f/16, 1/125, ISO 400.



*Honorable Mention Advanced B&W Print*  
**"Copenhagen Botanical Garden" by Dale Lewis**

It was taken at the Botanical Garden in Copenhagen, Denmark with a Canon T4i EF 75-300 lens. 105 mm, f/9, 1/400, ISO 100.

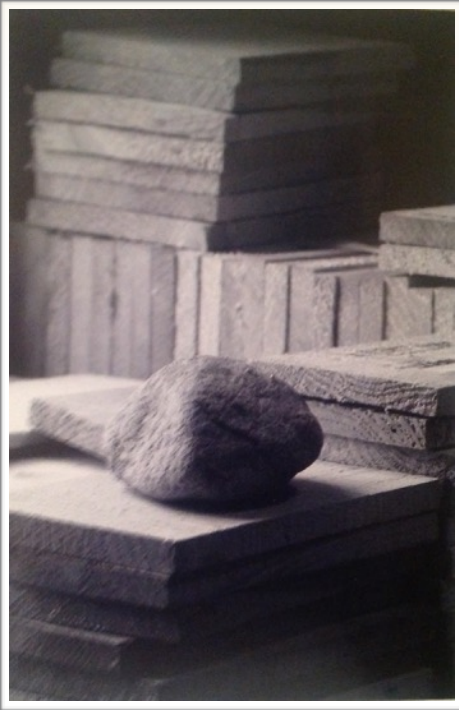


*1st Place Novice B&W Print*  
**"Last Judgement" by Gary McDavid**

This is a segment of a frieze on the National Cathedral. It was hand held using a 24-105mm lens. I used Topaz Glow as part of the finishing process. Camera settings: 105mm, f/8, 1/80 sec, ISO 320.



*2nd Place Novice B&W Print*  
**"Fire Escape" by Beth Altman**

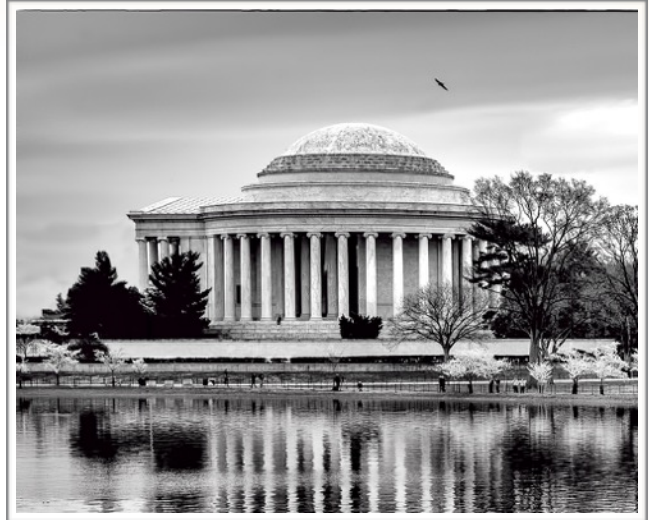


*3rd Place Novice B&W Print*  
**"Squares & Stones"**  
by Beth Altman



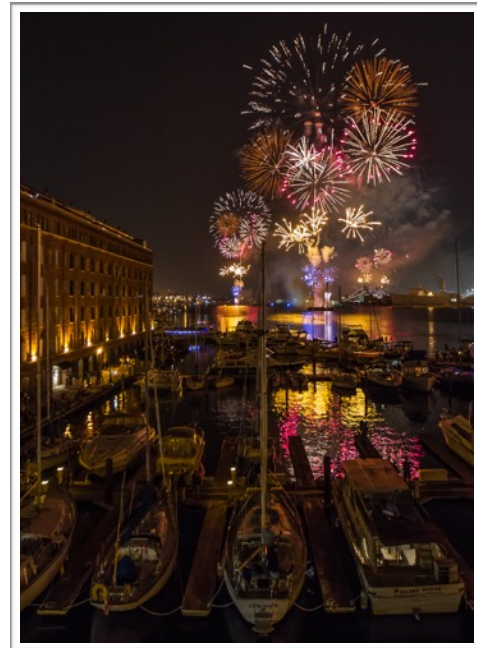
*2nd Place Advanced Color Print*  
**"Crossing The Lake"** by George Lea

Ricoh GXR/A12M, 35mm Summicron, f/8,  
1/800, ISO 200.



*Honorable Mention Novice B&W Print*  
**"Jefferson Memorial"** by Gary McDavid

This was taken at Cherry Blossom time last year early in the morning. Settings were: 50mm, f/6.3, 1/320, ISO 250.



*Honorable Mention Advanced Color Print*  
**"Fells Point Fireworks"** by Stan Collyer

One of the highlights of this summer's Fort McHenry Bicentennial celebration was a spectacular fireworks show in Baltimore's Inner Harbor. Tripod, 16mm, f/2.8, 1/13 sec, ISO 1600.



*1st Place Novice Color Print*  
**"1948 Packard" by Gary McDavid**

This was taken at the Rockville Auto Show last year. Taken with a tripod using a 70-200mm lens, 150mm, f/5.6, 1/40, ISO 100.



*2nd Place Novice Color Print*  
**"Spaceship Building" by Ira Wolpert**

This was taken on a canal cruise in Amsterdam on a sunny September day with my Canon T3i, 55mm lens, f13, 1/365. If you look closely at the picture you can see patrons eating on the patio and bikes parked outside. As the judge correctly observed, I had to do a lot of cropping to get the effect I wanted in the final result.



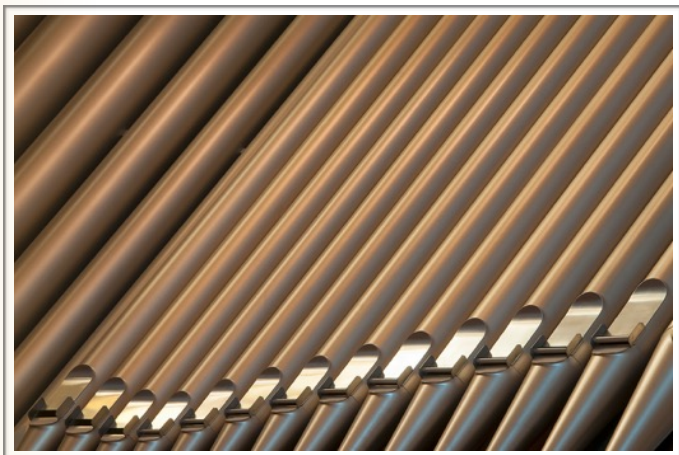
*3rd Place Novice Color Print*  
**"Love" by Linda Eisenstadt**

I took this photograph at a 2013 Panning Workshop at the Montgomery County Fair. I wasn't having much luck with panning so my eyes started to wander around and I caught this young mother with her daughter. I just loved the interaction between them. I took this photograph with a Nikon D5000, 95mm, f6, 1/125, ISO 200.



*1st Place Advanced Digital*  
**"Black Valley" by Shaun Moss**

This image of an abandoned farmhouse was shot in the remote Black Valley, Gap of Dunloe, County Kerry, Ireland in October, 2013. It was taken with a Nikon D90, converted to infrared at 590nm, with a Nikon 12-24mm DX lens at 12mm; f11, 1/20sec, ISO 200, custom WB. The image was post-processed in Photoshop CC, using the Khromagery IR conversion action, then converted to B&W in Nik Silver Efex Pro 2.



*2nd Place Advanced Digital*  
**"Organ Pipes" by Beth Koller**

This was taken on a recent Silver Spring Camera Club field trip to the Shrine of the Immaculate Conception. The building offered many photographic opportunities, and the staff was very obliging with advance reservation. The lines of the pipe openings were lyrical – especially on a diagonal. There was only a limited real estate for composing the picture because of other items in the foreground of the choir chamber, but there was enough.



*3rd Place Advanced Digital*  
**"Glowing Rose" by Jim Turner**

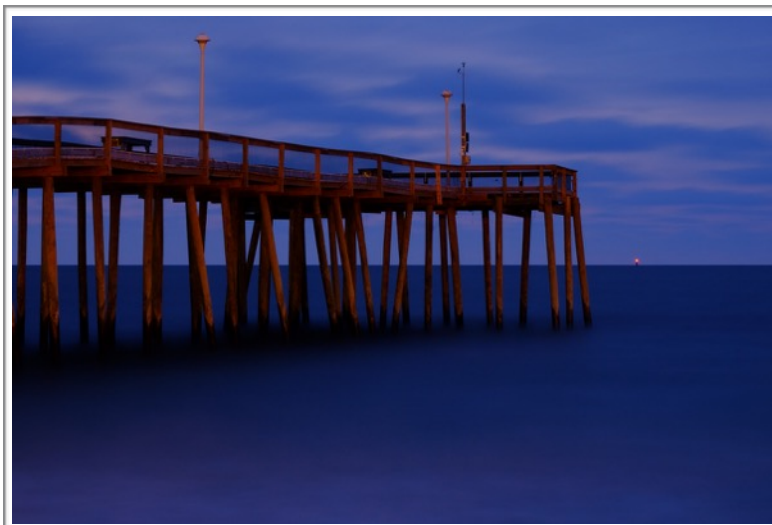


*Honorable Mention Advanced Digital*  
**"Butterfly" by Gosia Bodurka**

This photograph of a skipper was taken in my backyard. I cropped the image square in order to remove some "background clutter." Macro 100 mm, f/10, 1/125, ISO 640.

*Honorable Mention Advanced Digital*  
**"Roundup" by John Norvell**

This photo was taken at a horse ranch east of Santa Fe as cowboys moved a herd to a new grazing range. They emerged from a cloud of dust as we watched from a cactus patch. 400mm, f/8, 1/400, ISO 800.



*Honorable Mention Advanced Digital*  
**"OC Fishing Pier" by John-Pierre Ple**

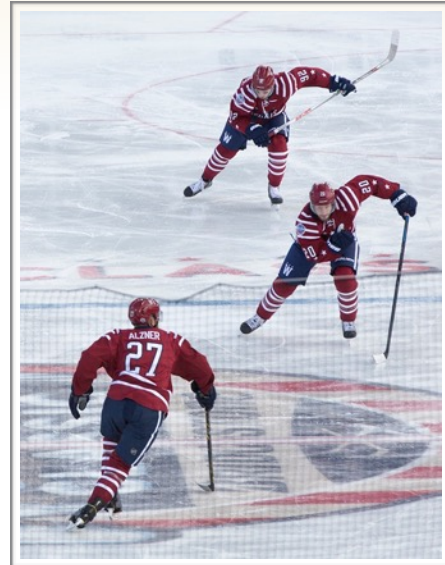
Ocean City, MD. 74mm, f/22, 58sec, ISO 400.



*1st Place Novice Digital*

**"Nobody Knows The Trouble I've Seen"  
by Ruthann Lewis**

The intensity of the pout and glaring stare and the seeming sadness behind the "jail bars" of the confines, all observed from a lower vantage point than the subject, was a must to capture. The B&W conversion complements the drama. Canon 5D MIII, 70-200mm f/2.8L, 200mm, f/8, 1/125 sec, ISO 12800.



*2nd Place Novice Digital*

**"In Sync" by Ruthann Lewis**

Taken at this year's Winter Classic hockey game, players of the Washington Capitals charged down the ice in perfect rhythm and coordination converging with a team mate offering balance to the shot -- beautiful synchronicity leading to a beautiful win. Canon 5D MIII, 70-200mm f2.8L with 2x extender, 400mm, f/8, 1/400, ISO 160.



*3rd Place Novice Digital*

**"Reflections" by Lisa Kruppa**

This is a hand held shot of a tunnel of lights. I used a wide angle lens (in a tilted position) and extreme depth of field. The image was replicated 3 more times to compose the final photo.



*Honorable Mention Novice Digital*

**"Valiant Horseman" by Christine Bedoret**

This is an image of Saint Joan of Arc on the Pont du Bir-Hakeim Bridge in Paris shot on January 3, 2015. It is the longest bridge in Paris. The camera used is a Sony RX100 M3. This image was shot in RAW and JPEG. Focal length 24mm, f/4, ISO 125.



*Honorable Mention Novice Digital*  
**"Lotus Swirl" by Vicki Allin**



*Honorable Mention Novice Digital*  
**"Colored Sneakers" by Elisa Frumento**

As I was walking through Georgetown, I passed the Sneakers Store and the variety of colors caught my eyes. f/2.4, 1/30.



*Honorable Mention Novice Digital*  
**"Reflection of Mercy" by Grace Park**

On a steamy summer day in 2014, I found a small water lily risen out of a muddy pond at Kenilworth Aquatic Gardens. The scene had a Buddhist sentiment with the pure white blossom as the "Goddess of Mercy" rising above worldly matters. 130mm, f/5.6, 1/125, ISO 100.



*Honorable Mention Novice Digital*

**"Here It Comes" by Fran Raab**

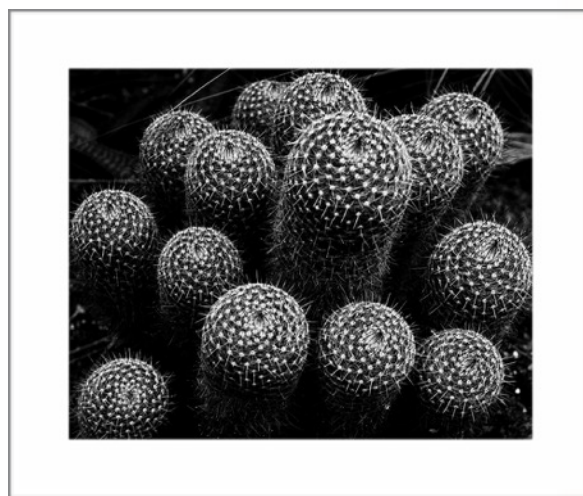
I took this photo of my grandson Thanksgiving weekend in Needham, MA. He was having a snowball fight with his father and was getting ready to throw what he calls a "snow baby." I took it with a Panasonic DMC-ZS40.



*Honorable Mention Novice Digital*

**"Lincoln Memorial" by Gary McDavid**

I went around to the left side of the Lincoln statue, set up my tripod with a 70-200mm lens and took the picture. After that, I moved to the front of the statue and attempted to set up my tripod. At that point, they told me that tripods were not allowed. So I was lucky to get the picture. I used Nik Silver Effects Pro in processing. 200mm, f/8, 1/25, ISO 100.



*Honorable Mention Novice Digital*

**"Cactus" by Murali Palangat**

The image was taken at the National Botanical Gardens in Washington DC. I conceptualised the image in black white, but took it in color as a digital image and then converted to black and white. The image was taken using Nikon D200, 24-105, 70mm, f8.0, 1/30, ISO 160.



# Q & A Education Night - Successful



The Q&A session was held January 20th in the Art Room of Premier Residence. Members came with their laptops or a photo copy of their desktop concerns. Topics ranged from Lightroom, Photoshop, Elements and NIK software. Many questions were raised and many solutions were offered. Most people found the session to be helpful and were glad for the advice and tips. But the best part of the evening was interacting with fellow club members, sharing some photos and hearing about travel experiences. Snacks were served topping off a good evening.



Photos by Doug Bolt

# Upcoming Field Trip

By: Greg Holden



## Smithsonian National Museum of Natural History NMNH

Led by John & Kay Norvell

10th St. & Constitution Ave. NW,  
Washington, DC 20560

January 31, 2015  
12:30 - 3:00 PM

RSVP John Norvell 301-530-1498 (home) or email at [norvellj@msn.com](mailto:norvellj@msn.com).

There are two exhibits of nature photos at the NMNH that will be of interest to the NIHCC members. The first is "Wilderness Forever," celebrating the 50 year anniversary of the Wilderness Act. There are over 40 impressive prints and the visitor is invited to vote for his/her favorite. The second exhibition is the NMNH annual Nature's Best award gallery. This exhibition has been featured at NMNH for several years, but this year is perhaps the best.

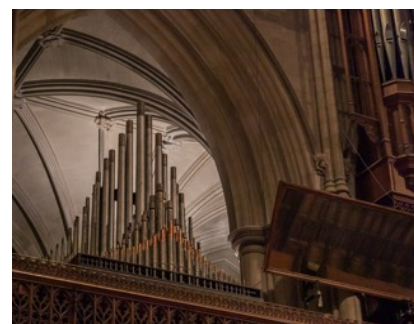
We suggest taking Metro to the Smithsonian station and meeting at the large elephant in the lobby of the NMNH at 12:30 p.m. Parking is difficult around the Mall. Some of us are meeting in the cafeteria at 11:30 for lunch if you care to join us before hand.

---

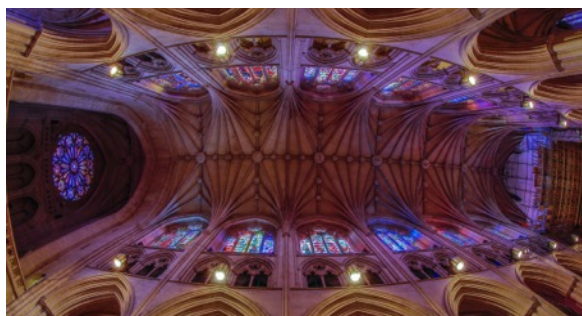
## Images from the Washington National Cathedral Field Trip



The Washing National Cathedral removed all the chairs from the nave for two weeks in January. This allowed photographers a unique opportunity to take pictures unimpeded. Four images are shown here.



See more pictures on the web site <http://69.195.124.92/~nihcamer/national-cathedral-field-trip-jan-2015/>



# Calendar of Monthly Meetings

Date	Location	Topic	Speaker
February 10 7 PM	Premier Residence	Competition Night Topic: <b>Cemeteries</b>	Gary Anthes
February 17 8 PM	Premier Residence	Travelogue Topic: <b>Southeast Asia</b>	John and Kay Norvell
February 24 7 PM	Premier Residence	Education Night Topic: <b>Images from the Channel Islands and Brittany</b>	Harvey Kupferberg
March 10 7 PM	Premier Residence	Competition Night Topic: <b>Wide Angle</b>	Justin Black
March 17 8 PM	Premier Residence	Travelogue Topic: <b>TBA</b>	TBD
March 24 7 PM	Premier Residence	Education Night Topic: <b>Power of Simplicity and Expression</b>	Nikhil Bahl
April 14 7 PM	Premier Residence	Competition Night Topic: <b>Geology in Nature</b>	Roy Sewall
April 21 8 PM	Premier Residence	Travelogue Topic: <b>Galapagos</b>	Jim Turner
April 28 7:00	Premier Residence	Education Night Topic: <b>Innovative Ways to Share your Photos</b>	Betty Caldwell
May 12 7 PM	Premier Residence	Competition Night Topic: <b>Open</b>	Marsha Liebl
June 9 7 PM	Cedar Lane Unitarian Universalist Church	Annual Social Dinner	Members

# NIH Camera Club COMPETITION TOPICS

2014-2015

## February 10th – Cemeteries

The focus of this topic includes unusual markers, headstones, crypts, and remembrances. Subject matter may include features such as gates or memorials so long as it is clear that they are part of a grave type area. Subject matter may also include activities that take place at cemeteries or grave sites, e.g., military caissons. There are no geographic or religious restrictions.

## March 10th – Wide Angle Photography

Images should be taken with a wide angle lens and should display one or more of the characteristics of such lenses: relatively increased depth of field, the potential to distort close objects, the ability to capture a large portion of a scene in a cramped location, the ability to capture broad vistas.

## April 14th – Geology (an aspect of nature)

The focus of the image should be some aspect of geology. It could be a large geologic formation or something as small as crystals.

## May 12th – Open

Any subject that produces an interesting image. It could consist of people, places, or things. Here is a chance to include sunrises/sunsets, sports events, humorous moments, photojournalistic happenings, street market scenes, a gala celebration, abstracts, and nonrepresentational subjects and techniques.

## June 9th – Annual Social Dinner

Members' Best Shots of the Year - Members bring food, select, enter and vote for each of the best of two shots they competed during the year in Digital, Black and White, Color Prints.

Please follow  
the rules.



Big Change  
Each member may  
submit  
only two images

## Rules for submitting Digital Images for Competition

By Peter Guion

**Size:** Images should fit within the following dimensions – **max 1280px wide by max 800px tall**. Please note that 800 wide x 1280 tall is not the same thing (and should not be used).

**Color Space:** Use **sRGB colorspace**, and .jpg file type with quality set to high or maximum.

**File Name:** All images should have their filenames changed to meet the following format: **Class~Name of Maker~Title**, in that order, where Class is either Novice or Advanced. Please note that Nov, Adv, NoviceDigital, AdvDigital or any other variants are not acceptable. Please use the tilde sign (~) as the separator. Dashes, underscores, or other punctuation for separators are not acceptable.

**Send as Attachments:** Please send entries as attachments to [NIHCameraClub@gmail.com](mailto:NIHCameraClub@gmail.com). Please note embedded/inserted or “drag and drop” images are not acceptable ways of submitting images. Only attachments should be used.

**Number:** **Two photographs per category** but not more than 6 in total may be entered by one member in any monthly competition.

## CLUB OFFICERS and COMMITTEES

**President:** *Susanne Strickland-*  
[SandCStrick355@verizon.net](mailto:SandCStrick355@verizon.net)  
**Vice President:** *Jordan Snyder-*[josnyder@comcast.net](mailto:josnyder@comcast.net)  
**Secretary:** *Linda Eisenstadt-*[linstadt@aol.com](mailto:linstadt@aol.com)  
**Treasurer:** *Stan Collyer-*[sccollyer@aol.com](mailto:sccollyer@aol.com)  
**Past President:** *Dick Sprott-*[sprotrichard@gmail.com](mailto:sprotrichard@gmail.com)  
**Program Chair:** *Suzanne Dater-*[stdater@gmail.com](mailto:stdater@gmail.com)  
**Education Chair:** *Jim Turner -*  
[Jim\\_Turner\\_1945@yahoo.com](mailto:Jim_Turner_1945@yahoo.com)

**Field Trip Chair:** *Greg Holden-*  
[gholden@imagesunderfoot.com](mailto:gholden@imagesunderfoot.com)  
**Digital Competitions:** *Yaakov Gridley-* [gridleys@aol.com](mailto:gridleys@aol.com)  
**Hospitality Chair:** *-Morris Pelham-*[CMPelham@msn.com](mailto:CMPelham@msn.com)  
**Membership Coordinator:** *Margaret Sprott-*  
[margaret.sprott@gmail.com](mailto:margaret.sprott@gmail.com)

**Nominating Committee Chair:** *Margaret Sprott-*  
[margaret.sprott@gmail.com](mailto:margaret.sprott@gmail.com)

**Outreach Coordinator:** *Betty Caldwell-*  
[bcaldwell@comcast.net](mailto:bcaldwell@comcast.net)

**PSA Rep:** *Dick Sprott-* [sprotrichard@gmail.com](mailto:sprotrichard@gmail.com)

**Nature Visions Rep:** *Jim Turner -*  
[Jim\\_Turner\\_1945@yahoo.com](mailto:Jim_Turner_1945@yahoo.com)

**Alternate:** *Stan Collyer-*[sccollyer@aol.com](mailto:sccollyer@aol.com)

**Newsletter Editors:**

**Content:** *Gary McDavid-*[gmcdavid@verizon.net](mailto:gmcdavid@verizon.net)

**Layout:** *Louise McLaughlin-*[lou.mclaugh@gmail.com](mailto:lou.mclaugh@gmail.com)

**Layout:** *Sherry Hogue-*[sherryhogue@comcast.net](mailto:sherryhogue@comcast.net)

**Webmaster:** *Emma Beatty Howells-*[embt01@gmail.com](mailto:embt01@gmail.com)

**Website Committee Chair:** *Saul Pleeter-*[pleeters@gmail.com](mailto:pleeters@gmail.com)

**Web Address:** <http://www.nihcameraclub.com>

This newsletter is published monthly by the National Institutes of Recreation & Welfare (R&W) Camera Club, Bethesda, MD. Submit items for publication to Gary McDavid at [gmcdavid@verizon.net](mailto:gmcdavid@verizon.net).

## How to Join the NIH Camera Club

Complete membership form (find on the web site and attached to each newsletter or pick up at a meeting). Please note that you must be a member to compete in the monthly competitions.

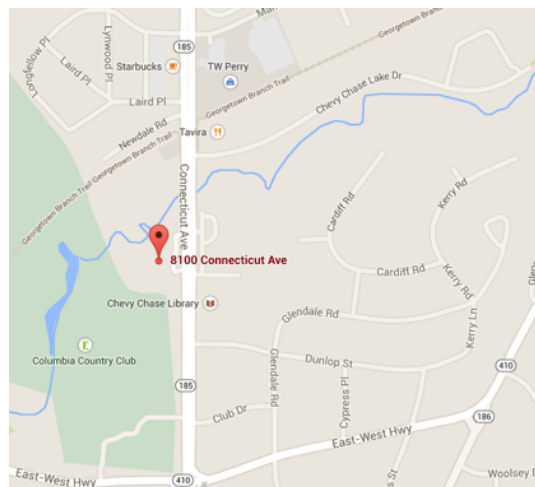
Mail membership form and check to the Treasurer: Stan Collyer 8817 Belmart Road Potomac, MD 20854 or submit at a regular meeting. **You do not have to work at NIH to join the club.**

## Meetings

### Location

### Five Star Premier Residences of Chevy Chase

8100 Connecticut Avenue  
Chevy Chase, MD 20815



Competition Night: Second Tuesday of the month  
Education Night: Fourth Tuesday of the month

## About the NIH Camera Club

The NIH Camera Club is sponsored by the Recreation and Welfare Association of the National Institutes of Health. Its purpose is to encourage its members to increase their knowledge, skills, and enjoyment of photography by holding meetings, classes, lectures, and demonstrations of the various phases of photography, and conducting workshops, Health (NIH) photographic competitions, and other photography related activities. Membership is open to all, not just NIH employees.

Meetings are normally held on the second Tuesday of each month from September through June at 7:00 P.M. at the Five Star Premier Residences on Connecticut Avenue in Chevy Chase, MD, or the Cedar Lane Unitarian Universalist Church in Bethesda, MD.

© NIH Camera Club and its Contributors.

The contents of *Cameraderie* are copyrighted. No material herein may be reproduced in any manner without the written permission of the Editor or the material's author.

# MEMBERSHIP APPLICATION and RENEWAL FORM

## National Institutes of Health Recreation and Welfare Camera Club (NIHCC)

The NIH R&W Camera Club is sponsored by the NIH Recreation and Welfare (R&W) Association. Historically, the club's membership consisted of current and former NIH employees and their families. The club is now open to anyone who has an interest in photography. However, **all** members must belong to the NIH R&W. Camera club membership is renewable in September. R&W membership is renewable every January. The Treasurer collects Camera Club dues in September and, as a convenience to members, also collects the next year's R&W dues at the same time. The next year's R&W membership materials will then be distributed as soon as they are available.

DATE: \_\_\_\_\_

NAME: \_\_\_\_\_

HOME or WORK ADDRESS: \_\_\_\_\_

PHONE #: HOME \_\_\_\_\_ CELL \_\_\_\_\_ WORK \_\_\_\_\_

E-MAIL ADDRESS \_\_\_\_\_

Do you want to receive R&W notices by e-mail? Yes \_\_\_\_\_ No \_\_\_\_\_

\*\*\*\*\*

FEES (please check the appropriate line(s):

\$ \_\_\_ Single membership: **\$31** + R&W membership (required): **\$9** = **\$40**

\$ \_\_\_ Single membership (already R&W member): **\$31** R&W number(s) \_\_\_\_\_

\$ \_\_\_ Family membership: **\$46** + R&W family membership (required): **\$9 each** (each family member must join)

Family members must live in same household      2 family members = **\$64**      3 family members = **\$73**

\$ \_\_\_ Newsletter mailing (*newsletter is normally sent by e-mail - pay this **only** if you also want it mailed*): **\$20**

TOTAL AMOUNT PAID \$ \_\_\_\_\_ Cash \_\_\_\_\_ Check # \_\_\_\_\_

\*\*\*\*\*

MAKE CHECKS PAYABLE TO: **NIH Camera Club**

SEND TO: Stan Collyer, Treasurer  
8817 Belmart Road  
Potomac, MD 20854  
H-301-299-6955  
Email: [sccollyer@aol.com](mailto:sccollyer@aol.com)

*Please indicate how you paid on the line above. This membership form **must** be completed, signed, and submitted to the Treasurer*

\*\*\*\*\*

**Please indicate how you would like to be involved in NIH Camera Club activities:**

- |   |  |
|---|--|
| <input type="checkbox"/> Help find program speakers/judges          | <input type="checkbox"/> Assist with field trips or workshops          |
| <input type="checkbox"/> Help publicize the Annual Open Competition | <input type="checkbox"/> Assist with bi-annual and other social events |
| <input type="checkbox"/> Help to welcome new members                | <input type="checkbox"/> Help with club outreach activities            |
| <input type="checkbox"/> Help with club exhibitions                 |  |
| <input type="checkbox"/> Other _____                                |  |

\*\*\*\*\*

### WAIVER

**I hold the NIH Camera Club (NIHCC) and each member of NIHCC, individually and collectively, blameless for any injury that may occur to me or my guests, or my property while participating in any NIHCC activity or event.**

\_\_\_\_\_  
Print Name

\_\_\_\_\_  
Signature

\_\_\_\_\_  
Date