

Camraderie

The Newsletter of the NIH R&W Camera Club, Bethesda, MD Vol. 49 (9); September 2014



Photo: Union Brigadier General Gouverneur Kemble Warren, Little Roundtop Gettysburg, PA By Sherry Hogue

Calendar and Upcoming Events pp. 6-9

Reports on Summer Workshops and Fieldtrips pp. 10-18

Competition How to's p. 20

September's Judge: Marti Belcher

By Jim Turner



Life is a Journey

Marti Belcher is the judge for our first competition of 2014-15 on September 9, 2014. Marti grew up on a dairy farm in New York state. She retired from her job with the Federal Government when she was 55 to pursue her interests in the visual arts and, in particular, in photography. She has received numerous honors and awards for her work and has published a number of articles and two books of her photographs. This is how she describes her work: "Life is a journey, a continuum of everyday events and ordinary people, all of which make for an extraordinary lifetime of experiences. My photography is simple and straightforward. I have a passionate interest and curiosity about people, world cultures and ideas. These are the forces that dominate my



personal life and my photography. Actually I draw no distinction between my work and my personal life. They are one and the same. I am an adventurer, a lover of color, culture and the bewitching. My path often takes me to Asia. It is a long way from a dairy farm in New York State but the dairy farm was a good place to start the journey. I learned to appreciate the every day events and the emotions that make us human. Today I photograph ordinary people and ordinary situations all over the planet Earth."

President's Message

By Susanne Strickland



In July, while I was enjoying a cruise up the Rhone River in France, our Board was hard at work planning the Club's activities for next year. They have done such a great job that they are making my job easy. Thank you, Board, for your diligent efforts. I think we will all be pleased with the results.

We have received a lot of comments about the Club (mostly secondhand) and have tried to make adjustments to the way we operate based on this feedback. For example, we have heard that the meetings go on too long. We are trying to improve this by starting on time, shortening the business meeting and having the president make all of the announcements. Additionally, the judges will be restricted to a 10-min introduction before the actual judging begins (there will be no presentation by the judges). To make sure the judge's feedback is meaningful, the Program Committee carefully reviewed lists of judges provided by other camera clubs and selected ones who are certified judges, experienced, and favorably recommended. We have been told that there is not enough

opportunity for meaningful critiques of our work. So we have decided to devote most of our second meeting time to critique opportunities. We have heard that the competition topics for next year are too much like homework assignments, so we have modified/changed some of the topics to allow more flexibility. We have been told that members want more opportunities to learn photographic technique. So we are planning field trips to accommodate these needs. We realize that this is a work in progress, and we may not have achieved the ideal balance yet, but we will continue to tweak our plans based on your comments.

The Board welcomes your feedback regarding the operation of the Club, and would like to hear it firsthand. Therefore, we will be providing evaluation forms for all of our activities and ask that you take the time to complete them -- giving us constructive suggestions for how we can make our Club better. Or you can email a member of the Board with your suggestions and ideas. If you are interested in leading a field

trip, teaching a class, or organizing a workshop, we'd love to hear from you. The one thing we don't need is, "they do it this way at North Bethesda or Silver Spring does that." While it is definitely helpful to hear how other clubs are run to give us new ideas, we are not the other clubs and what works for them may not be the best solution for us. For example, I am not a member of another club, but I have been told that some clubs are closed to new members. This leads me to believe that their membership is composed mostly of advanced photographers who may be more competitive and less interested in learning technique; whereas, we have many novice photographers who are interested in ways to improve their photography. So let's focus on our Club and what our members want and need. And we can only do this by your active participation in our planned activities and by good communication between you and the Board. We welcome your ideas, your suggestions, and your willingness to lead an activity.

SHARE YOUR TALENTS AND EXPERTISE WITH US.

sandcstrick355@verizon.net

Education Nights (2nd monthly meeting)

At our year-end meeting in June, the Club voted to begin holding two meetings per month “to the extent feasible” beginning with our 2014-15 program year. This will allow the Board to offer other regular activities to benefit members in addition to our traditional monthly competitions. Our second monthly meetings, which will be called “Education Nights”, will be held on the fourth Tuesday of the month starting at 7:00 pm at the Residence. Two Education Nights are planned for the Fall of 2014.

- On **Tuesday September 23**, we will have a “Member Presentation Night” where three of our more experienced photographers will present and discuss their images for 30 min per person with questions and comments from the audience. They can discuss whatever they wish (inspiration, practical details, post processing, etc.), but the emphasis will be on audience education. The presenters will be Cathrine Sasek, Greg Holden and Doug Bolt.
- On **Tuesday October 28**, we will have a “Critique Night” where members can submit images which will be critiqued by Cynthia Keith an experienced local photographer. This is your opportunity to get detailed comments and suggestions about your work from an expert. Information about submission of images will be included in the next Newsletter.



PSA Rep Rap

By Dick Sprott

This is my last column before heading off to Albuquerque for the PSA 76th Annual Conference of Photography. The conference starts September 27 and runs through October 3rd. Margaret and I will take at least a week to drive to New Mexico so that we can indulge our loves of birding and photography along the way. We'll do the same on the way back (retirement has its advantages). While at the conference we will join up with other NIHCC members (past and present) as well as friends from clubs around the world. While it is probably a bit late to decide to attend this year's conference, it is not too soon to think about next year's conference in West Yellowstone, MT, September 27 – October 3, 2015. If you are not already a PSA member and are attracted to a photo conference in Yellowstone National Park, why not join now and enjoy the services of PSA through the year. You can do this even if you are not retired! See me for membership forms and info at the next club meeting. AND, if you really want to try to attend this year's conference, see me about that and I'll try to help.

Photographic Society of America
76th Annual Conference of Photography

Join us in
Albuquerque
New Mexico



The Photographic Society of America offers an exciting lineup of photo tours, workshops, programs, presenters, vendors and division meal meetings at our 76th Annual International Conference.

Photo © J.R. Schreiber

**Saturday, September 27-
Friday, October 3, 2014**

More information is available at
www.psa-photo.org

Welcome Gloria Spellman

By Geoff Grant

First I see Color, 95 percent of the time, I see the color, then I look closer and say, "What am I looking at here? What's in here? Then, I find the image." So says, Gloria Spellman a recent new member of

N I H C C .
Gloria first took up photography to facilitate her oil painting, and rather than painting somebody else's picture, she wanted to



but not before getting some quick snaps! She has enjoyed the club field trips and the camaraderie, but she does admit to going into her own "zone" as she focuses on her thing.

Gloria says she enjoys the nature photography of Ian Plant, and she's taking an on-line course with Kathleen Clemons, whom she considers really challenging, through the Picture Perfect School of Photography. Gloria says, "we get comfortable sometimes with our work and decide to ignore some



By Gloria Spellman

paint her own in oils. But oils take a while and Gloria was busy with work and her personal life, and she began to find more immediate satisfaction with her photography. Soon, she bought a DSLR, took a workshop, and fell in love with it. Once she retired from DOD in 2013, she began taking pictures all the time, and laughs at the steep learning curve; the camera, Photoshop, Lightroom, composition, exposure. . . Now, she's tossing around png, jpeg, add ons, digital sets, textures -- jeez. Gloria's just substituted all that DOD jargon for photography and it sounds like she hasn't missed a beat. With her new found interest, Gloria began researching camera clubs in the area, looking in particular for ones that had summer activities, and the NIHCC was one of the few that did. She had just been transferred to Ft. Meade, in what turned out to be her last job before retirement, and the NIHCC meetings were conveniently located on her way home to Tysons Corner.

She claims she's a bit of an introvert and she's been surprised at how photography has drawn her out of doors and into nature photography, when before she may have been just as glad to stay indoors reading a good book, or enjoying family. Now, as she says, she's out there in new territory, especially, as a female, by herself, but now, with the comfort of her fellow club members, she's enjoying things that she may not have been open to before. She still says that if a deer ran up to her she'd probably pass out,



By Gloria Spellman

little thing that our instinct tells us is wrong, but we like the overall image. Sure enough, as soon as I submitted an image like that, it was the first thing Kathleen commented on!" Well, I'd say Gloria's instincts are pretty good -- good with her photography and good in her camera club selection too!

Welcome to the NIHCC Gloria Spellman!

Calendar of Monthly Meetings

DATE	LOCATION	TOPIC	JUDGE/SPEAKER * Member
September 9, 2014 7:00pm	Premier Residence	Competition <i>Topic</i> : Update your Portfolio	Marti Belcher
September 16, 2014 8:00pm	Premier Residence	Travelogue <i>Topic</i> : National Parks of Utah	Larry Clare*
September 23, 2014 7:00pm	Premier Residence	Education <i>Topic</i> : Member Presentation Night	Doug Bolt*, Greg Holden*, Cathrine Sasek*
October 14, 2014 7:00pm	Premier Residence	Competition <i>Topic</i> : Hard Lighting	Victoria Restrepo
October 21, 2014 8:00pm	Premier Residence	Travelogue <i>Topic</i> : The Pantanal Wetlands of Brazil	Suzanne Dater*
October 28, 2014 7:00pm	Premier Residence	Education <i>Topic</i> : Critique Night	Cynthia Keith
November 11, 2014 7:00pm	Premier Residence	Competition <i>Topic</i> : Architectural Elements	Tom Hardy
November 18, 2014 8:00pm	Premier Residence	Travelogue <i>Topic</i> : Nepal	Gosia Klosek*
December 9, 2014 7:00pm	Premier Residence	Competition <i>Topic</i> : Panning	Mary Ann Seton

NATURE VISIONS PHOTO EXPO 2014

Consider staying overnight at reduced rates of \$75.



Comfort Suites
7350 Williamson Boulevard,
Manassas, VA, US, 20109
Phone: (703) 686-1100



Nature Visions Photo Expo 2014
Prince William County Campus
10960 George Mason Circle,
Manassas, VA 20110

4.5
miles

Upcoming Fieldtrips

By Greg Holden



Sept 20th 3 pm -- Victorian Architectural in Redding, Md. Redding is a historic town by BWI airport with several restored Victorian-era style homes and a restored train station. The late afternoon sun will provide strong shadows to bring out the details of these buildings.



Oct 18th 9 am -- Rockville Classic Car Show at Rockville Civic Center. An annual event, this car show has it all from Packards to Ferraris. Opportunities for wide shots and close up details of the cars.



September's Travelogue

By Larry Clare



On **September 16 at 8:00 pm**, I will be showing my Kodachrome 35 mm slides taken in the National Parks of Utah: Zion, Bryce, Capitol Reef, and Arches.



NIH Camera Club COMPETITION TOPICS

2014-2015

September 9th – Update Your Portfolio with New Images

Images need to have been taken during the last year, September 10, 2013-September 9, 2014. This topic encourages people to develop a new portfolio and to participate in/lead upcoming club field trips. The images could feature travels or seasonal activities. It could also feature skills that you obtained or projects you worked on over the summer.

October 14th– Hard Lighting

The image should be high contrast depicting shadows with sharp edges. The illumination should be direct, such as from the sun at a high angle in the sky on a clear day or from a small artificial light source. Silhouettes created by hard lighting would fall in this category.

November 11th – Architectural Elements

The focus is the architectural elements of a building and not the complete structure. Architectural details could include columns, corridors, doors, gargoyles, stairways, trim or windows. Images showing a complete building or façade will be disqualified.

December 9th – Panning

Panning is taking a single photograph or photographic series while moving the camera horizontally or vertically while keeping the moving subject in view. The goal is to capture a moving object in sharp definition while the background is blurred.

January 13th – Open

Any subject that produces an interesting image. It could consist of people, places, or things. Here is a chance to include sunrises/sunsets, sports events, humorous moments, photojournalistic happenings,

street market scenes, a gala celebration, abstracts, and nonrepresentational subjects and techniques.

February 10th – Cemeteries

The focus of this topic includes unusual markers, headstones, crypts, and remembrances. Subject matter may include features such as gates or memorials so long as it is clear that they are part of a grave type area. Subject matter may also include activities that take place at cemeteries or gravesites, e.g., military caissons. There are no geographic or religious restrictions.

March 10th – Wide Angle Photography

Images should be taken with a wide angle lens and should display one or more of the characteristics of such lenses: relatively increased depth of field, the potential to distort close objects, the ability to capture a large portion of a scene in a cramped location, the ability to capture broad vistas.

April 14th – Geology (an aspect of nature)

The focus of the image should be some aspect of geology. It could be a large geologic formation or something as small as crystals.

May 12th – Open

Any subject that produces an interesting image. It could consist of people, places, or things. Here is a chance to include sunrises/sunsets, sports events, humorous moments, photojournalistic happenings, street market scenes, a gala celebration, abstracts, and nonrepresentational subjects and techniques.

June 9th – Annual Social Dinner

Members' Best Shots of the Year - Members bring food, select, enter and vote for each of the best of two shots they competed during the year in Digital, Black and White, Color Prints.

See you there!

76 Great Speakers
40 Educational Sessions

NATURE VISIONS
PHOTO EXPO 2014

Friday-Sunday, November 14-16, 2014
Hylton Performing Arts Center, Manassas, VA

© 2014 Nature Visions

Nature Visions 2014

By Stan Collyer and Jim Turner



The 2014 Nature Visions Photo Expo is right around the corner (November 14-16). It promises to be better than ever, of course! Here's a summary of what you need to know now.

1. All NIHCC members should have received an email **announcing registration is now open**. If you haven't done so already, please browse the website (www.naturevisions.org) to see what's on the agenda this year. Some courses and lectures do sell out quickly.

2. You should also have been notified about the **\$30 discount** available to club members when registering for paid events. If you follow the link in that email, the discount should be applied upon checkout. If you didn't get that email, or can't find it, you can enter your email address during the checkout process. *Please note that your discount can only be applied to the purchase of a single item and that item must be purchased in a separate transaction.* If you run into problems, let Stan or Jim know.

3. **Submitting images for the juried competition will be done digitally** this year, for the first time. This is a big change, as it means we don't have to print and mat entries until/unless they've been selected for the exhibition by the judges. Also, in the unlikely (!) event that no image of yours is selected, there is no requirement to volunteer during the Expo.

4. There are six nature categories this year, plus a special "fine art" category that's not restricted to nature images. Club members can **submit up to ten nature entries** (six at no charge, and four more for \$20), plus two fine art entries (at no charge).

5. The window for submitting entries is **August 25 – September 24**. Detailed guidance for this is available on the Nature Visions website. www.naturevisions.org/entry. By the time you read this, you should have received an email with login instructions and a password.

6. Since this is a brand new process there are bound to be some glitches, so **please don't wait until the last minute to start uploading your entries**. You can always change your mind (i.e., delete or replace images) until the deadline.

7. When you are notified of acceptance, you'll have about three weeks (October 15 – November 5) to **print and mat your images**. Our club may be able to provide some help with this if you need it. More details will be forthcoming.

In summary, there's a lot to digest, so start perusing the website now. The Expo provides many excellent opportunities for learning, as well as for showcasing your talents. After our superb showing in last year's competition, we have a reputation to maintain, so let's give it our best shot!

If you have any questions, please contact:

Stan Collyer

sccollier@aol.com (301) 299-6955

or

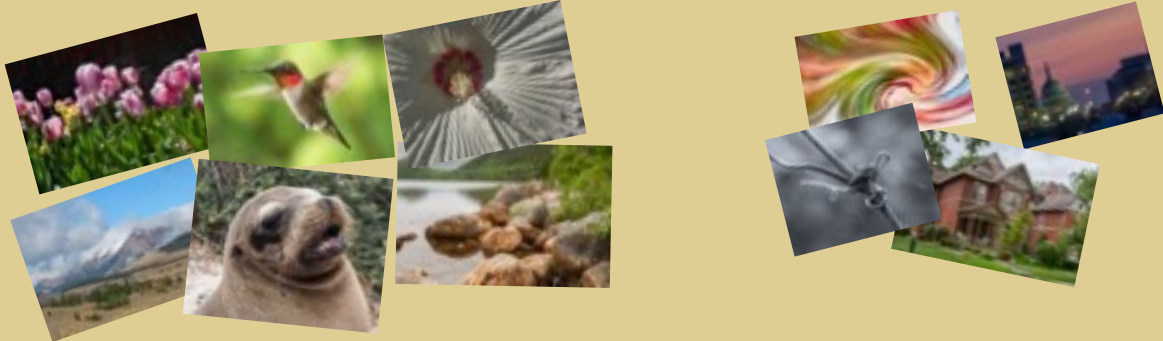
Jim Turner

rjamesturner@verizon.net (301) 681-9133].

NATURE VISIONS PHOTO EXPO 2014

Share your favorite image

Digital entries - See p.9 for details



Summer Programs

Photography 101 Workshops

By Saul Pleeter



If you really want to learn something – try teaching it! I've been a teacher for at least 40 years and jumped at the opportunity to really grasp the technical aspects of photography by volunteering to teach three classes in our Summer Program. The first two classes – the Camera and Exposure dealt with the craft of photography, while the third concentrated on Composition. While manuals list the technical features of a camera, they do not tell you in what circumstances to use them. Books and classes on basic photography or simply going on an outing with more experienced photographers are ways to acquire this knowledge.

Probably the toughest of the three classes was Composition – it separates the artistry from the craft and it is the most difficult skill to acquire. It's a skill that requires practice and more practice and skill



development benefits immensely from feedback/critique of others. Joining a camera club and participating in its competitions are important ways to improve

Sunflower Fieldtrip

By Jordan Snyder

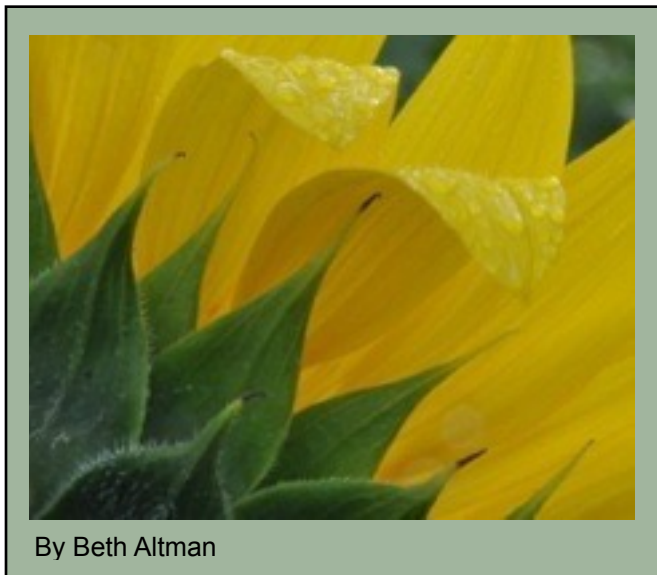


On Saturday morning July 12, many of our camera club members rose to a 4 am wake up call. We were excited to be on our way to the annual sunrise



By Jordan Snyder

sunflower fieldtrip. It was a perfect morning for a drive into the country to the McKee Beshers Wildlife Management Area, located far out at the end of River Road past Potomac in beautiful Poolesville, MD. There are 25 acres -- 5 fields of amazing sunflowers. Many thanks to Greg Holden and John Norvell for organizing this event, which was



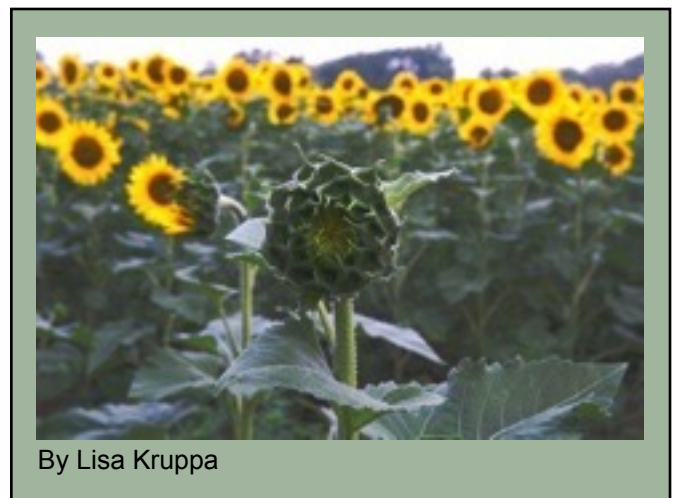
By Beth Altman

attended by about 14 club members. It's at least the fourth year in a row for this outing, and this year, the guys nailed the timing! The weather was

impeccable with sunflowers in picture-perfect bloom.

Arriving at about 5:30 am for the 5:50 am sunrise, the parking lot was already beginning to fill up. In addition, there was a full moon setting. Some photographers arrived extra early to try and catch the full moon as a backdrop to the sunflower field. However, the sky was too cloudy for this.

When the sun began to rise, the meadow was silently alive with photographers working the flowery fields from every possible angle. People were standing on ladders for an interesting perspective of an infinite landscape of sunflowers while others



By Lisa Kruppa

were deep in the rows working on macro shots. The goal for many was to capture the vast beauty, and it was not an easy task. Every few minutes the light would become different, yet better.

Choosing the right lens and focal length became a challenge in this beautiful setting. Was the goal to get a macro shot of a bee that landed on one of the sunflowers or to capture the entire field, filling the frame with nothing but flowers while keeping out the dull sky? Completely different lenses and camera settings are used to capture each of these situations.

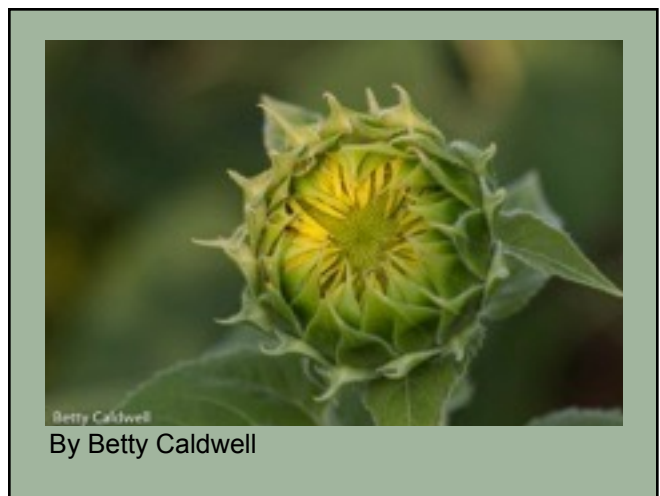
Sunflower - cont.

One approach for capturing the entire field of rich and abundant sunflowers is to use a technique called “perspective compression.” When you compress an image, you make the objects that are far away in the background seem closer. Hence the image becomes compressed. In our case, this technique would make the sunflowers seem denser – they would appear closer together or compressed. Using a tripod, a zoom lens adjusted to a long focal length and your camera set to Aperture Priority or Manual mode, compose your frame by filling it completely with sunflowers. Pick a long focal length such as 150mm or more. Then set your aperture to f/18 or smaller to get a very long depth of field. Use your shutter preview button to make sure everything is in focus properly and then snap the photo. With a small aperture your shutter speed may need to be slow in order to compensate for the low light getting to your sensor. Consequently, the camera may be



susceptible to shake. Therefore, you may need a remote release for your camera or use a mirror lock-up technique to keep it as steady as possible.

The sunflower fields are a perfect place to practice this compression technique. You can experiment with different focal lengths from wide angle to ultra-zoom and see the resulting differences in compression. The weather at McKee Beshers on the day of our field trip was so perfect all we wanted to do was experiment. And as you can see from the photos below, many beautiful photos were taken.



Congressional Cemetery Fieldtrip

By Ira Wolpert



Eight club members met at the Congressional Cemetery on Saturday, July 19, 2014. On a partly cloudy, but low humidity day in the mid-70s, we mingled with runners, dog walkers and families at this interesting and historical site.

Each member was given four different self-guided tours of the cemetery to aid them in their hunt for unusual and interesting headstones, plaques, crypts, memorials, monuments and tables located throughout the 32-acre site. A free docent tour was available in the late morning for those who were interested in a general appreciation of the cemetery. There were food trucks and snow cone vendors in the late morning, and many loose-running dogs. Not your typical cemetery!

Many burial sites contained the designation "HIS". Lisa Kruppa later informed me that her research revealed that this is the name of Jesus in Greek -- as it is written in the Gospels.

If you weren't available for the outing, I recommend that you visit the cemetery site and then choose one of the many self-guided tours, which can be downloaded from the site.

A few unusual markers from my collection taken that day are attached.



Back Roads in Gettysburg Fieldtrip

By Geoff Grant



On Tuesday and Wednesday, August 5-6, nine members of the NIHCC met at Geoff Grant's historic house and farm in Fairfield, PA for a fun trip through the beautiful Adams County countryside. Co-hosted by Louise McLaughlin and Geoff, the



By Louise McLaughlin

rest of the group consisted of Dick and Margaret Sprott, Harvey Kupferberg, Chiyuki Tanaka, Sherry Hogue, Gloria Spellman and Larry Clare,

The event began Tuesday at 1:00 with Geoff providing an overview of the itinerary and a challenge to find some fresh photographic perspectives on what may otherwise be iconic scenes in the area. He reminded

us to think about 2014 NIHCC competition topics and perhaps we could find images meeting those requirements. Louise provided a very informative slide presentation on "exposing to the right" (ETTR), explaining how taking the exposure off midpoint provides more color values for post processing. With that, we went enthusiastically into the countryside in search of opportunities at the



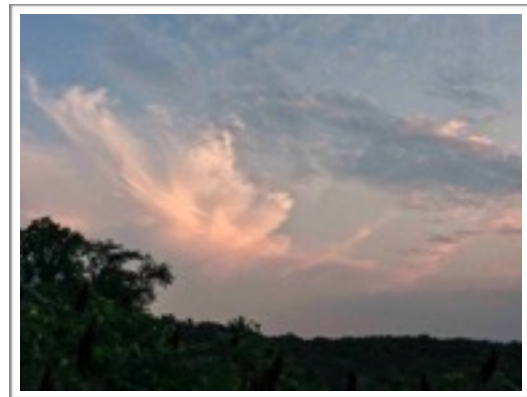
By Chiyuke Tanaka

scenic Sach's Covered Bridge, the beautiful vista at Lady Farm, the historic architecture on the Gettysburg College campus, and the sunset from Little Round Top. We even squeezed in dinner at the famous Lincoln Diner!



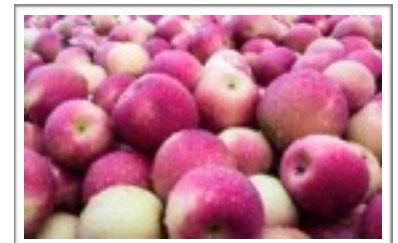
By Margaret Sprott

Wednesday morning found most of us back at Geoff's house at about 5:30 am for sunrise, which, while not super dramatic, was not bad. After a continental breakfast we all took off



By Harvey Kupferberg

for some more photographic scenes. We saw the beautiful country side from Hauser Winery where beside the vista high on the hill, we had access to the processing rooms while they were making Jack's Hard Cider from their very own 150 acre orchard. Later we went to the Round Barn for architecture, donkeys, and still lifes. A quick stop at the Adams County Winery for flowers and vines closed out the shoot for the morning.



By Geoff Grant

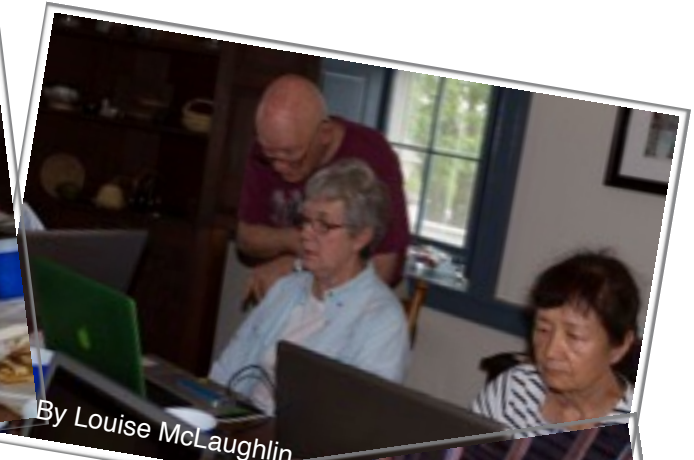
Gettysburg - cont.

We wrapped up our two day field trip with a leisurely lunch of soup and sandwiches from the Emmitsburg Carriage House followed by some Lightroom tips and advice as we downloaded our images.

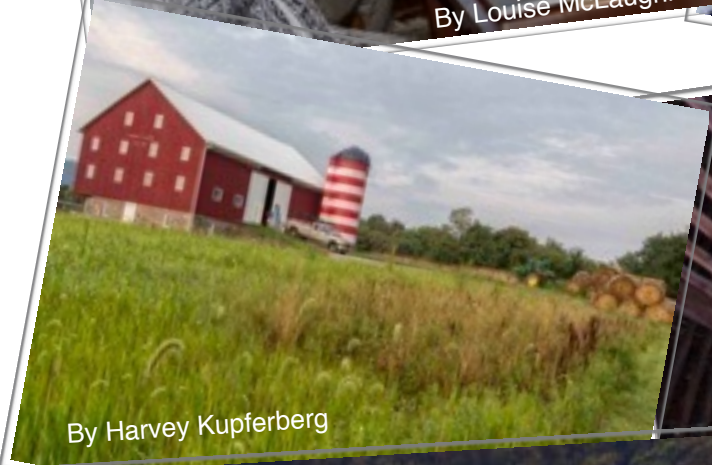
The delightful thing about the field trip was that everyone shared both technical savvy and artistic perspective. It never ceases to amaze how we all discover beauty in unique perspectives. Another good example of NIHCC Cameraderie!!



By Louise McLaughlin



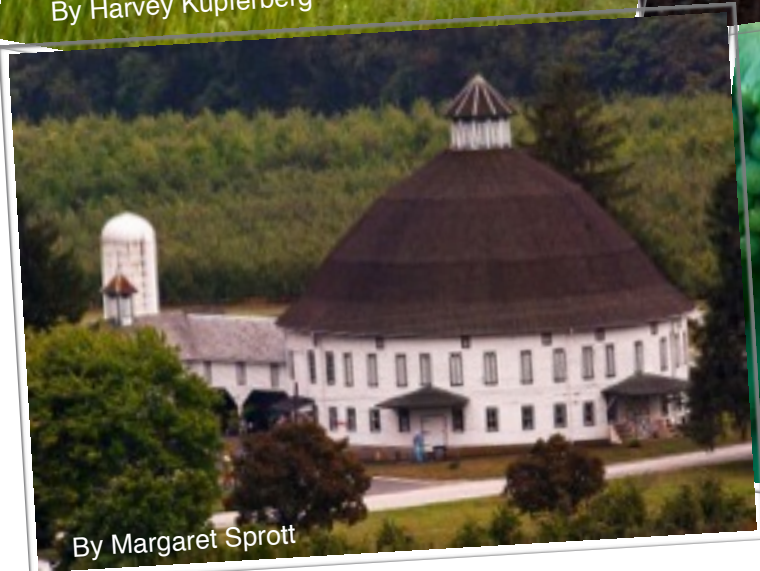
By Louise McLaughlin



By Harvey Kupferberg



By Margaret Sprott



By Margaret Sprott



By Dick Sprott

How to take Better Portraits Workshop

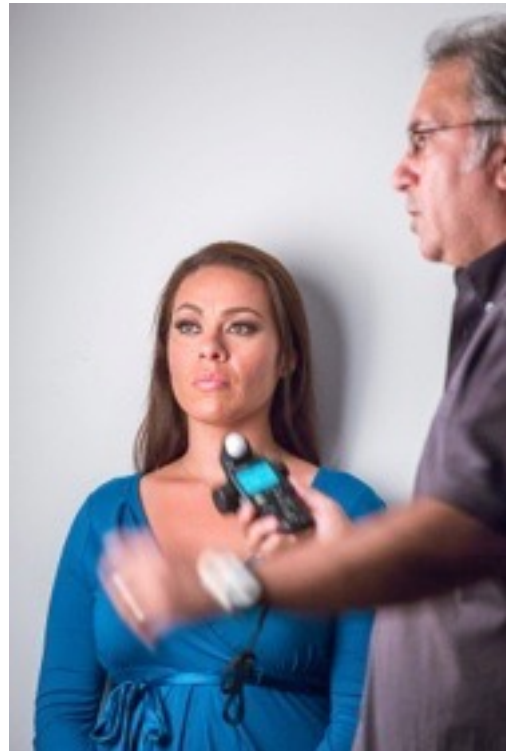
By Louise McLaughlin



On August 7, Dave Blecman of Positive Negatives gave a fast paced seminar on how to take portraits with a single light. He brought along not only his camera, lights, reflectors, computer and



By Louise McLaughlin



By Doug Bolt

cables but a live model as well. Following David's instructions, she assumed a variety of poses to demonstrate the differing effects of light. After each pose David would take a picture which would immediately appear on the projector screen for all to see. He insists that the key to successful portrait shooting is getting the light absolutely precise for consistent skin tones for each shot. He would meter the light for every pose even though there had been very little movement by the model. Only after making adjustments on the camera, the light itself or the light placement would he make the shot. It was clear to all of us that using this method, he achieved beautifully consistent skin tones despite changing poses, background or color of clothing.

I was surprised by a couple of his statements: he does not shoot in RAW, and he does not use fast lenses. But he DOES set the WB, aperture and

shutter speed to precisely what he needs, so he does not have to post process so much.



By Louise McLaughlin

David leads many different kinds of workshops. See his website for more information. <http://posneg.com/about-david/>

Macro and Close-up Photography

By Leonor Guillen



On August 13, Jim Turner presented a workshop on Macro and Close-up photography. This was part of the series of workshops that were offered this summer. Nineteen club members attended this very informative workshop.

Jim showed samples of his work and explained how he accomplished each image. He also discussed the equipment he uses; practical things, such as



white balance, RGB, histograms and image preview, depth of field, lighting, composition, and post processing.

He shared that to obtain best results in macro/close up photography, he shoots RAW, always does focus

stacking, shoots at f/11 or f/13 (f/13-f/16 on full frame cameras), uses color histograms to monitor his images, does not change light sources at a shooting, and shoots indoors at a desktop.

Some of his suggestions for the audience included: Start by shooting indoors, work your subject, use cropping to get what you want, don't just do in and out cropping, tilt the image, "post" visualize to make adjustments, and think about black and white if color is not important.



At the end, he demonstrated how he uses Helicon Focus to come up with his best images.

Taking Videos with a DSLR Workshop

By Louise McLaughlin



The last activity for the summer was held on August 20 when Doug Bolt presented a workshop, "Taking Videos with a DSLR." An overview of settings, shutter speed, ISO, and focus sparked lots of questions before we experimented with taking videos. Doug guided us through setting up our cameras so we could practice. A lively sharing session followed as each struggled to take video. We were impressed with Doug for he was able to help each one even though we all had different cameras.



Montgomery County Fair Congratulations

By Susanne Strickland

As far as we can tell, the following members received awards for their photography at the Montgomery County Agricultural Fair. Thanks to Kevin Hanlon for getting this information. Unfortunately, we don't know specifically what places they received and the titles of their entries. Apologies to anyone not on the list that should be.

Stan Collyer - four awards
Yaakov Gridley - two awards
Beth Koller - four awards
Lisa Kruppa - four awards
George Lea - three awards
Saul Pleeter - two awards

A special recognition, the Milton S. Berg Award, goes to Yaakov for his image of "The People's Store". The award included cash to encourage him in photography. The purpose of this award is to recognize a photograph "that did not receive the level of special recognition it deserved."

It's great to see our members receive recognition for their skills as photographers outside of the club and their visibility is a good recruiting tool for attracting new members (two people asked me about the club while I was there bragging about you). Thank you for taking the time to enter and CONGRATULATIONS for your winnings. The club is very proud of you.

The Milton S. Berg Award



The Peoples's Store
By Yaakov Gridley

This image was taken inside of John Poole's log cabin store in Poolesville that is operated as a historic sight. It was taken at ISO 200, F/16, with seven images used to capture the high dynamic range of the scene, with exposures from 1/4 second to 20 seconds.



Three Columns
By Stan Collyer



Waiting
By George Lea



Sisters
By Saul Pleeter

Welcome to another club year!

By Yvette Spano



According to that famous online source, Wikipedia, “hospitality is the relationship between the guest and the host, or the act or practice of being hospitable. This includes the reception and entertainment of guests, visitors, or strangers.” Well, as a new member and now the Chair for Hospitality, I’d like to extend a wholehearted welcome to this year’s session and an invitation.

Would you like to join me in the continued pursuit of being the front and center for our club? Yes, many attend our events to learn, share and socialize. However, the Hospitality Committee ensures that all feel welcomed and have a place that affords these interactions. This Committee is seeking people like you to

donate time, energy, and experience in a variety of areas, including food pickup and delivery (minimal activity), set-up/breakdown of room layouts, cheerful greeters, hosts for chatter meetings, and more.

Together, we can continue in the footsteps of others in the hospitality arena. If you are interested in joining this committee and would like to find out more about how you can participate or would prefer to provide time and assistance whenever possible, please contact me by email: myspano@yahoo.com or give me a call at (240) 505 1225 . I’d love to hear from you! If you have any ideas or suggestions that will benefit our Committee, feel free to contribute those as well (even if not joining).

Volunteer

HOW CAN YOU HELP?

- be an assistant to a chairperson
- set up for meetings
- record competition winners
- preside over a meeting
- enlist speakers and workshop leaders
- follow up with speakers, presenters, etc
- write up activity reports for newsletter
- seek last minute help via e-mail or telephone
- organize a workshop
- share a skills (camera or post processing)
- etc. you name it, we can use it

THANK YOU

Vivian Horovitch
Nick Logan
Vickie Allin

for volunteering at the NIH employee
Health and Wellness Day 2014.

Rules for submitting Digital Images for Competition

By Peter Guion

Size: Images should fit within the following dimensions – **max 1280px wide by max 800px tall.** Please note that 800 wide x 1280 tall is not the same thing (and should not be used).

Color Space: Use **sRGB colorspace**, and .jpg file type with quality set to high or maximum.

File Name: All images should have their filenames changed to meet the following format: **Class~Name of Maker~Title**, in that order, where Class is either Novice or Advanced. Please note

that Nov, Adv, NoviceDigital, AdvDigital or any other variants are not acceptable. Please use the tilde sign (~) as the separator. Dashes, underscores, or other punctuation for separators are not acceptable.

Send as Attachments: Please send entries as **attachments to NIHCameraClub@gmail.com.** Please note embedded/inserted or “drag and drop” images are not acceptable ways of submitting images. Only attachments should be used.

Making Sense of NIHCC Competition Rules and Etiquette

By Dick Sprott

Over the last several months members of the NIHCC Board have heard comments and questions about the club competitions, focused on who should compete as advanced or novice photographers.

The rules on the next page are extracted from the rules appendix of the club bylaws. I have only included the rules that pertain to this discussion. If you want to read the entire set of rules, go to: <https://www.sites.google.com/site/nihlensclub/meeting-schedule/competition-topics/competitions>.

Now for my personal opinion, which I believe is shared with the rest of the club’s board.

I bolded the section of the rules that says “In fairness to true novices, experienced new members are encouraged to voluntarily compete in the advanced class.” There are two categories of new members to whom this comment is relevant:

1. New members who are experienced who have not been a club member anywhere before, but who are not really novice photographers. This sort of new member upon entering club competitions should soon discern that he/she is not a novice and in fairness to true novices, this member should voluntarily “self-promote” to advanced class in any competition category/class where he/she is really not a novice. This is obviously a personal judgment and we can only hope that members will act with integrity.
2. New members who are advanced photographers in another club who join NIHCC either because they like our activities or because they have “maxed out” their competition status in a club and can start over again in NIHCC competition. Clearly this sort of new member should self-identify as an advanced photographer and compete at that level. Competing as a novice is not really honorable and certainly is not fair to true novices.

Competition as a novice is an important learning experience and an important part of the enjoyment of club membership for novices. Let’s all make sure we honor both the letter and the spirit of novice competition.

RULES CONCERNING COMPETITION OF IMAGES

General

A member is not restricted to competing in the same class across image types (categories).

New members may enter any class they wish. In fairness to true novices, new members are encouraged to voluntarily compete in the advanced class.

Once a novice earns 50 points in a particular image type, he/she must compete in the advanced class in that image type beginning the next club meeting.

A member may compete in each of the image types. Novice or advanced standing is independent for each category (image type).

Any member who has achieved Master status (300 total points – see Judging and Scoring number) must compete in the advanced class in all image types (categories).

Judging

Within each competition class, the best photographs are selected by the judge(s) and are then ranked. There must be a minimum of four entries by at least two different makers in order to conduct a competition. 25% of the entries shall receive awards. The Secretary will inform the judges of the number of awards for each competition category.

Scoring

Within each competition, points are awarded as follows:

- First Place - 6 points
- Second Place - 4 points
- Third Place - 2 points
- Honorable Mention - 1 point.

Point Accumulation

Points are accumulated in each separate category/class. This total is used to determine the member's class.

Points are accumulated over all categories/classes and over time. These points are used in awarding plaques and star merit awards and for determining "Master" status.

Tallying and Posting

After each competition, points for that competition and cumulative points for the year for each member are tallied and recorded by the Secretary. Cumulative points are published in the June issue of the NIH Camera Club Newsletter.

Star Merit Awards

For 50 total accumulated points in any category/class over any time period, a member of the NIH Camera Club in good standing shall be awarded an engraved Star Merit Award Plaque. For each additional 50 points earned (up to a maximum of 250 points) another star is added to the plaque. Upon reaching 300 accumulated points, a member shall be known as a Master Photographer and be awarded an engraved Master of Photography Plaque.

Once Master status is achieved the member must compete in the Advanced class in all image types.

CHOOSE YOUR COMPETITION LEVEL

CLUB OFFICERS and COMMITTEES

President: Susanne Strickland-SandCStrick355@verizon.net

Vice President: Jordan Snyder-josnyder@comcast.net

Secretary: Linda Eisenstadt-linstadt@aol.com

Treasurer: Stan Collyer-sccollyer@aol.com

Past President: Dick Sprott-sprottrichard@gmail.com

Program Chair: Suzanne Dater-stdater@gmail.com

Field Trip Chair: Greg Holden-

gholden@imagesunderfoot.com

Digital Competitions:

[Yaakov Gridley-gridleys@aol.com](mailto:Yaakov.Gridley-gridleys@aol.com)

Hospitality Chair:-Yvette Spano-myspano@yahoo.com

Membership Coordinator: Margaret Sprott -

margaret.sprott@gmail.com

Nominating Committee Chair:

Beth Hunter-hunterbeth@comcast.net

Outreach Coordinator:

Betty Caldwell-bcaldwell@comcast.net

PSA Representative: Dick Sprott-sprottrichard@gmail.com

Nature Visions Rep: Stan Collyer-sccollyer@aol.com

Alternate: Jim Turner- rjamesturner@verizon.net

Newsletter Editors

Content: Gary McDavid-gmc david@verizon.net

Layout: Louise McLaughlin-lmclaugh@comcast.net

Webmaster: Emma Beatty Howells-embt01@gmail.com

Website Committee Chair: Saul Pleeter-pleeters@gmail.com

Workshop&Education: Jim Turner- rjamesturner@verizon.net

Web Address: <http://www.nihcameraclub.com>

This newsletter is published monthly by the National Institutes of Health (NIH) Recreation & Welfare (R&W) Camera Club, Bethesda, MD. Submit items for publication to Gary McDavid at gmc david@verizon.net.

How to Join the NIH Camera Club

Complete membership form (find on the web site and attached to each newsletter or pick up at a meeting). Please note that you must be a member to compete in the monthly competitions.

Mail membership form and check to the Treasurer:
Stan Collyer 8817 Belmart Road Potomac, MD 20854 or submit at a regular meeting. **You do not have to work at NIH to join the club.**

Competition Rules

General Rules

Up to three images may be entered in each category (black and white prints, color prints, digital) but only a total of 8 images. Images may be competed a maximum of two times in a regular competition but any image that has won a 1st, 2nd, or 3rd place may not be competed again.

Digital Entries Requirements

Pixels = 1280Wx800H

Format = sRGB ~ jpg high

Label = class ~ name of maker ~ title

E-mail to: NIHCameraClub@gmail.com

Print Entries

Prints must be at least 5x7 inches and must be mounted on something sturdy enough to stand alone in the light box. They may not be framed. The name of the maker, the title, and an arrow pointing to the top of the photograph must be on the back of prints. Nothing may be written on the front. Entries must be registered on the appropriate sheet (e.g. Novice Slides or Advanced Color Prints) before the meeting. To make the job of the Secretary easier, please print neatly.

Complete competition rules may be found on the web site.

About the NIH Camera Club

The NIH Camera Club is sponsored by the Recreation and Welfare Association of the National Institutes of Health. Its purpose is to encourage its members to increase their knowledge, skills, and enjoyment of photography by holding meetings, classes, lectures, and demonstrations of the various phases of photography, and conducting workshops, photographic competitions, and other photography related activities. Membership is open to all, not just NIH employees.

Meetings are normally held on the second Tuesday of each month from September through June at 7:00 P.M. at the Five Star Premier Residences on Connecticut Avenue in Chevy Chase, MD, or the Cedar Lane Universalist Unitarian Church in Bethesda, MD.

© NIH Camera Club and its Contributors.

The contents of *Cameraderie* are copyrighted. No material herein may be reproduced in any manner without the written permission of the Editor or the material's author.

MEMBERSHIP APPLICATION and RENEWAL FORM

National Institutes of Health Recreation and Welfare Camera Club (NIHCC)

The NIH R&W Camera Club is sponsored by the NIH Recreation and Welfare (R&W) Association. Historically, the club's membership consisted of current and former NIH employees and their families. The club is now open to anyone who has an interest in photography. However, **all** members must belong to the NIH R&W. Camera club membership is renewable in September. R&W membership is renewable every January. The Treasurer collects Camera Club dues in September and, as a convenience to members, also collects the next year's R&W dues at the same time. The next year's R&W membership materials will then be distributed as soon as they are available.

DATE: _____

NAME: _____

HOME (or WORK) ADDRESS: _____

PHONE #: HOME _____ CELL _____ WORK _____

E-MAIL ADDRESS _____

Do you want to receive R&W notices by e-mail? Yes _____ No _____

FEES (please check the appropriate line(s):

\$__ Single membership: **\$31** + R&W membership (required): **\$9** = **\$40**

\$__ Single membership (already R&W member): **\$31**

R&W number(s) _____

\$__ Family membership: **\$46** + R&W family membership (required): **\$9 each** (each family member must join)

Family members must live in same household 2 family members = **\$64** 3 family members = **\$73**

\$__ Newsletter mailing (*newsletter is normally sent by e-mail - pay this **only** if you also want it mailed*): **\$20**

TOTAL AMOUNT PAID \$ _____ Cash _____ Check # _____

MAKE CHECKS PAYABLE TO: **NIH Camera Club**

SEND TO: Stan Collyer, Treasurer
8817 Belmart Road
Potomac, MD 20854
H-301-299-6955
Email: sccollyer@aol.com

*Please indicate how you paid on the line above. This membership form **must** be completed, signed, and submitted to the Treasurer every year.*

Please indicate how you would like to be involved in NIH Camera Club activities:

- | | |
|---|---|
| <input type="checkbox"/> Help find program speakers/judges
<input type="checkbox"/> Help publicize the Annual Open Competition
<input type="checkbox"/> Help to welcome new members
<input type="checkbox"/> Help with club outreach activities
<input type="checkbox"/> Help with club exhibitions
<input type="checkbox"/> Other _____ | <input type="checkbox"/> Assist with field trips or workshops
<input type="checkbox"/> Assist with bi-annual and other social events |
|---|---|

WAIVER

I hold the NIH Camera Club (NIHCC) and each member of NIHCC, individually and collectively, blameless for any injury that may occur to me or my guests, or my property while participating in any NIHCC activity or event.

Print Name

Signature

Date