

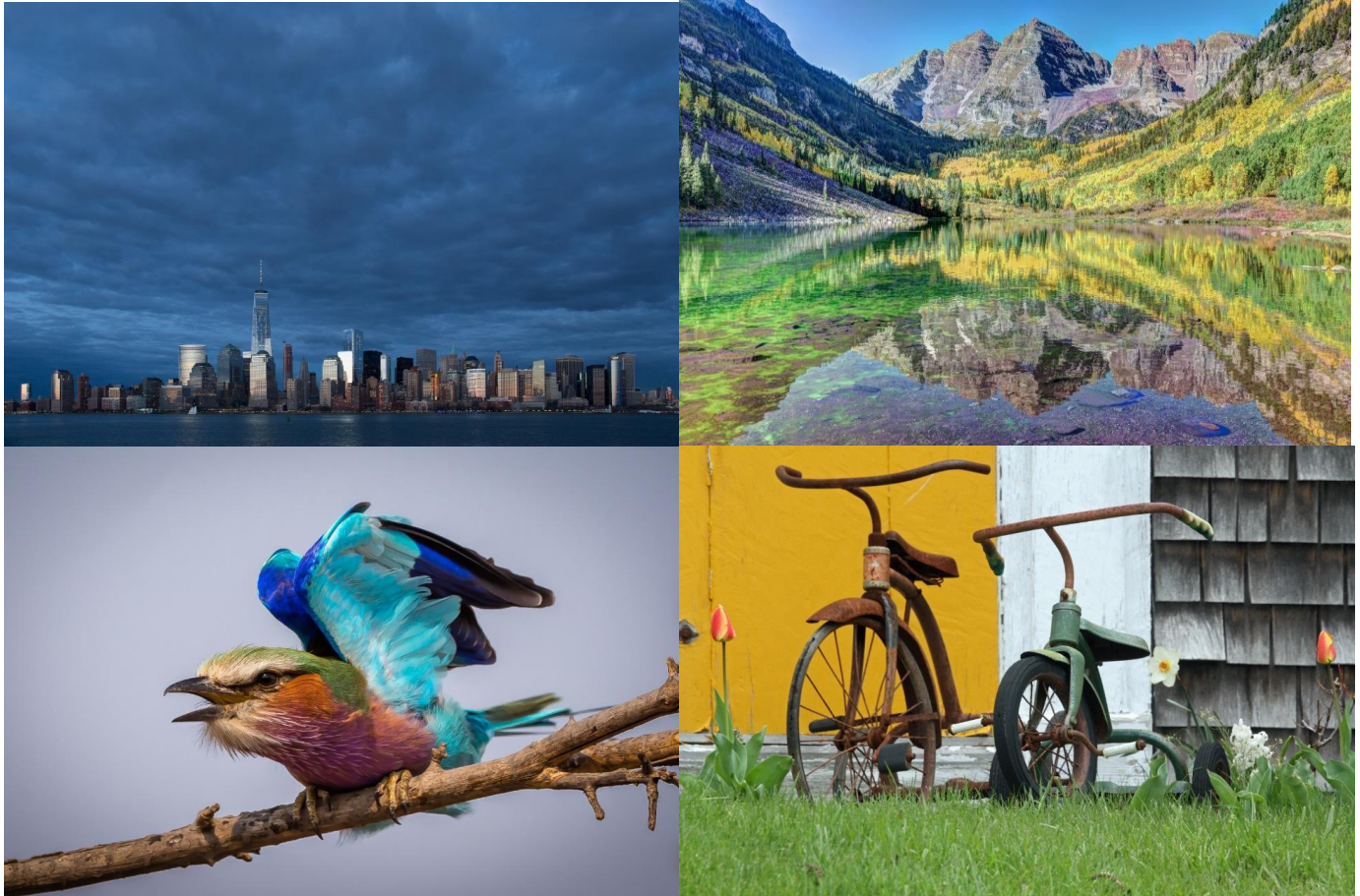
Presented by the North Bethesda Camera Club

PHOTO ESSAY 2016



Are you interested in stories of places near and far told through gorgeous photography and enchanting music? *Photo Essay 2016* will be an afternoon of photographic stories and lovely music.

Rosborough Center Auditorium
Asbury Methodist Village
Gaithersburg, MD
Sunday, March 13th
3:00 to 5:00 p.m.



NBCC Photo Essay 2016

Sunday, March 13, 3:00 – 5:00 pm

Mark your calendars! NBCC is pleased to present the Photo Essay 2016 program. This continues our Club's long-running annual tradition in which NBCC members produce slide shows of their beautiful photographs set to music. This year is the 30th anniversary of NBCC slide shows. Past programs have been very well received, and this is our most popular event of the year.

This will be our 9th year presenting the show in a large and comfortable theater-like setting. This year the presentation will be on **Sunday afternoon, March 13th**, in the Rosborough Center auditorium at Asbury Methodist Village, Gaithersburg, MD. The auditorium seats 250 people very comfortably. (Nevertheless, we recommend arriving early to get a good seat.)

Members of NBCC, residents of Asbury Village, and their respective guests, are invited to attend. Members of other local camera clubs and their guests are also invited. The event is free. The show will be presented from 3:00 to 5:00 pm, with a short intermission. Directions to Asbury Village are on the last page.

An Overview of the Photo Essay 2016 Program

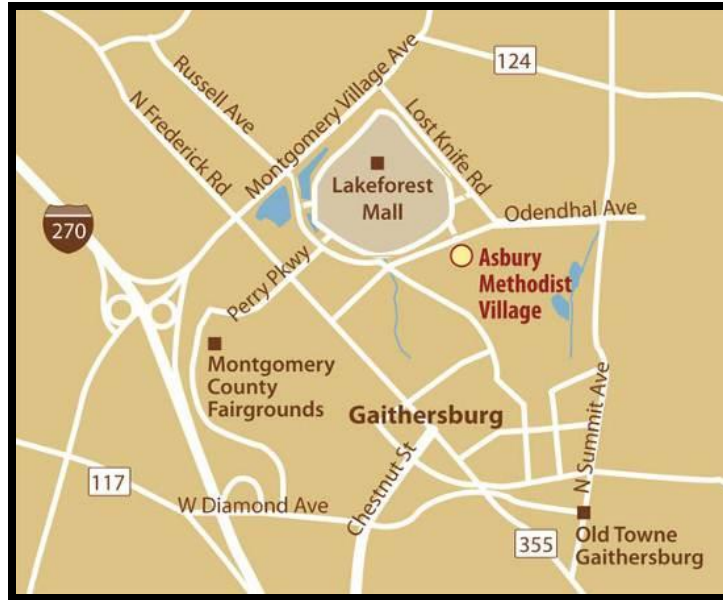
At the risk of losing the element of surprise, here is a preview of some of this year's photo essays. This year, as always, we have wonderful essays. But with more diversity than usual. Cuba before the tourists. Botswana wildlife, at peace and during "the kill". Poignant essays that will bring tears to your eyes. Travel to interesting places – Iceland; Yellow Knife, Canada at the Arctic Circle; Buenos Aires, Argentina; Tuscany, Italy; Istanbul, Turkey as well as the architecture and people of NYC. For art lovers we have impressionistic essays. For nature lovers we have the White Sands desert, patterns within trees, and the rolling hills of the Palouse in Washington State. For fun we have abandoned neon signs from Las Vegas, and crusty old vehicles and buildings from everywhere. And if you enjoy people, dancing and street photography, you cannot not miss this show! These essays—and other surprise essays—will delight you, entertain you, make you laugh and cry, educate you and perhaps motivate you to develop your own photo essays for presentation to family, friends, and colleagues.

Please make sure this once-a-year-event is on your calendar, and come early to ensure good seating! Previous shows have nearly filled the auditorium.



Photos on these pages are complements of Lori Ducharme, Michele Egan, Greg Holden, Evelyn Jacob/Bruce Davis, Stan Collyer, Steve Lapidus, Gail Bingham, Nancy Wolejsza, Roy Sewall, Stan Collyer, Steve Lapidus, and Tom Sullivan respectively.

Directions to Asbury Methodist Village in Gaithersburg, MD



- **(From the Beltway)** Exit Interstate 495 to head north on Interstate 270, taking Exit 11, Montgomery Village Avenue. Proceed through light at end of exit ramp onto Montgomery Village Avenue, heading northeast. Continue through light at Route 355 (North Frederick Avenue), and take the first right onto Russell Avenue. At the second traffic light, turn left onto Odendhal Avenue. At the first traffic light, turn right into the Main Entrance gate for Asbury Methodist Village. Associates are available at the Gatehouse to direct you to the Rosborough Center auditorium.
- **(From Frederick, etc.)** Go south on I-270 and take Exit 11, Montgomery Village Avenue/Route 124. Turn left onto Montgomery Village Avenue. Continue through light at Route 355 (North Frederick Avenue), and take first right onto Russell Avenue. At second traffic light, turn left onto Odendhal Ave. At first traffic light, turn right into Main Entrance gate for Asbury Methodist Village. Associates are at the Gatehouse to direct you to the Rosborough Center auditorium.

Information about Asbury Methodist Village can be found at: <http://lwmc.com/contact/directions.html>

Information about NBCC is at: <http://nbccmd.org/>