

# *Camraderie*

The Newsletter of the NIH R&W Camera Club, Bethesda, MD . . . Vol. 50 (5); May 2015



*Louise McLaughlin*

# May's Judge - Marsha Liebl

By: Vickie Allin



Marsha Liebl has been a professional nature photographer since 1999, a second career that she says has proven to be much more enjoyable than her first career, as the business manager for a publishing house in Washington, DC.

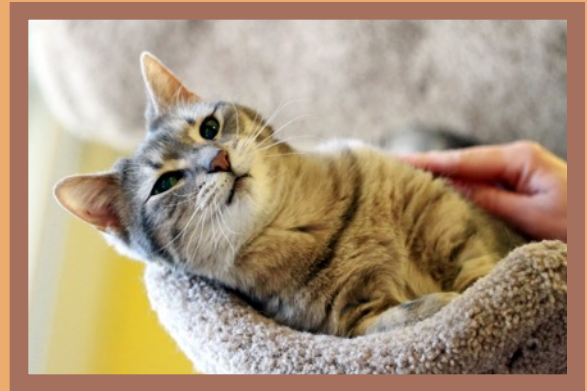
For ten years she was an active participant in local and regional fine art festivals, an interesting but exhausting way to get your work seen by the public. After sales took a dip during the recession, she decided to stop doing art festivals and instead concentrate on teaching, exhibiting, and selling through other venues, specifically online sales. She's active on Zazzle.com ([zazzle.com/marshal Liebl](http://zazzle.com/marshal Liebl)) and will soon be on Cafe Press.

Marsha's images have won top awards in many local and regional exhibits and competitions, are in numerous public and private collections, are sold at Strathmore Hall, have been published in Shutterbug and Bethesda Magazine, and one (so far) has been purchased by a greeting card company.

Marsha is a four-term past President of the Gaithersburg Camera Club and was named Grand Master Photographer by the club in 2009. She has taught nature and macro photography for the Lifelong Learning Institute at Montgomery College from 1999 to 2012, and has also taught for the Washington School of Photography and Capital Photography Center.

Marsha is a lifelong animal lover and in 2011, she began an affiliation with the Animal Welfare League of Montgomery County (AWLMC) as their official photographer. The AWLMC is a private shelter for cats, and the only no-kill shelter in Montgomery County. About 75 of her images were used in a MD Public TV show

about the shelter. Her images also adorn their website and are featured in their newsletter, "Purrsonality". Since Marsha started taking pictures for shelter, their adoption rate has skyrocketed!



Marsha offers private lessons for groups or individuals and is available as a speaker for camera clubs and community groups that are interested in photography. She has judged for many local camera clubs, including Silver Spring, Gaithersburg, Frederick, and NIH.

[marshal Liebl@yahoo.com](mailto:marshal Liebl@yahoo.com)  
[www.LieblPhoto.com](http://www.LieblPhoto.com)  
[www.zazzle.com/marshal Liebl\\*](http://www.zazzle.com/marshal Liebl*)



# PSA Rep Rap

By: Dick Sprott



Spring is here, finally! Flowers are in bloom and the pollen is drifting in clouds. Now is the time to hone your spring green photo skills. Twenty years ago and more, back when I was teaching color photography for NIH, capturing spring green was my favorite assignment for students. The subtle color of leaves in the spring is lovely and was very difficult to capture on film. Fuji was too saturated, Kodachrome was too yellow and Ektachrome was too blue. You have no such excuses now since digital imaging has made the task easier. BUT, that doesn't mean it is any less rewarding. Mastering subtlety in these days of HDR and super-saturation is still a worthwhile endeavor. Challenge yourself and have a go at it. Need help? Courses are harder to find these days and much can be learned online. PSA actively provides help through a variety of member benefits. One that you might find particularly useful is a digital study group offered by the Projected Image Division (PID) of PSA. Join a group and enjoy interacting with others in a nonjudgmental environment.

PID-Digital Study Groups are available free to all members of PSA. They have a long history of helping those who are interested in improving their photographic skills and review techniques, through mutual assistance and interaction. The reviews generally follow the guidelines of

exhibition judges, with emphasis on impact, composition and technical quality.

Each group is a closed unit, password protected, which ensures that only the members of the assigned study group have access to the images and reviews, encouraging a free and open exchange.

Members with more photographic experience who are interested in helping others are involved and can often provide more detailed assistance while honing their own skills. Having experienced members involved is very important to the learning process. Some volunteers serve as Commentators, providing an even more thorough critique and perspective to the group. Members may join more than one study group, but you do have to be a member. Let me know if you want to join and have any difficulty joining or if you want more personal information.

For more information about a Digital Study Group click on the link <http://www.psa-photo.org/pid/pid-dsg> or contact Les Milligan, PID Digital Study Groups Director, at [lesmilli@frontiernet.net](mailto:lesmilli@frontiernet.net), - phone 931-839-3714.

*Editorial CORRECTION with apologies:* In the last Rep Rap Dick Sprott was quoted "This is the 14th year we have done a grandkid trip and the last." This statement should have read, "This is the last 14<sup>th</sup> year grandkid trip." It meant that he was taking granddaughter Sydney on her trip in the year she turns 14 (her 14th year) as he has done for his other two grandkids.

*Call for Nominations*  
**The 2015 NIH Camera Club Lorraine Lasko  
Service Award**

Last year, our long-time member and dear friend, Lorraine Lasko, passed away. Lorraine made an exceptional contribution to our club by serving as our Program Chair – arranging for all of our speakers and judges – for over 10 years. To honor her, the club created a special award called the NIH Camera Club Lorraine Lasko Service Award (or the “Unsung Hero” award, for short). This is an annual award and it is time to issue the Call For Nominations for 2015.

Our club is fortunate to have many people who have provided significant service to keep the club running smoothly for the benefit of us all – and we are very grateful to all who have given so generously of their time and talents. However, the Lorraine Lasko Service Award will recognize exceptional service to the club, whether it be long-term service like Lorraine’s or service during a shorter period of time that required exceptional time and effort.

To be eligible for the award, a nominee must be a current member of the NIH Camera Club. However, the service to be recognized may be either past service or service the member is currently providing. An individual member may only win the award once. The award winner will be selected by the Board in a written, secret ballot. Current Board members are eligible for the award; however, if they are nominated, they must recuse themselves from voting to select the winner of the award.



Photo by Doug Bolt

*Nominations must be received by no later than Friday, May 15, 2015*

Name of Nominator: \_\_\_\_\_ Date: \_\_\_\_\_

Name of Nominee: \_\_\_\_\_

Reasons for nominating this person for the Lorraine Lasko Service Award:

\_\_\_\_\_  
\_\_\_\_\_

(Use additional paper if necessary)

Send your nomination by regular mail or email to: Pete Guion  
2445 Lyttonsville Rd., Apt. 703  
Silver Spring, MD 20910  
Email: photopete96@gmail.com

*Nominations must be received by no later than Friday, May 15, 2015.*

# Interview - Jim Turner

By: Morris Pelham



While this is Jim Turner's third year to be a member of the NIH Camera Club, I learned a little known fact about one of his hobbies. He has been a tennis player much longer than a photographer. He still plays. But today, he also makes photographic shots of the professionals as well.

Jim made this photo at the Citi Open tournament in Washington, DC on July 26, 2014. He made about 200 photos that day. I asked him what made this photo special? He said this competitor had perfect form on her serve. Jim arrived early at the tournament and took a seat in the bleachers at ground level, close to the baseline. He noticed this pro and her perfect serve and was able to take this great shot without other people in the frame.

Jim's camera is a Nikon D7100 with a 70-300mm lens. He used a fast shutter speed, saved the file in the camera as RAW and processed it with Lightroom and Photoshop. This photo lives in digital only for it has never been printed. He entered this photo in competition at our meeting in October, 2014.

As you may know, Jim is currently the Education Chair for the club.



# End of Year Social Dinner

*Potluck Dinner and  
Vote for Best Photos of 2015*

June 9, 2015 7 pm

Unitarian Universalist Church  
9601 Cedar Lane, Bethesda, MD  
(Main Building Lobby)

*Please bring if your last name starts with:*

- A – E One bottle of Wine
- F – I One case of Bottled Water & One bag of Ice in a Cooler
- J – O Salad or Side Dish enough for 4 people
- P – W Main Dish enough for 4 people

## *Directions*

1. Coming north on Old Georgetown Rd., turn right onto Cedar Lane immediately after the firehouse. Coming south on Old Georgetown Rd., turn left onto Cedar Lane
2. Cross Wisconsin Ave., continue on Cedar Lane, pass under the beltway. You will then come to a light on Beach Drive. Go through the traffic light proceed up the hill until you see the sign for the main entrance to the Unitarian Universalist Church. (Do not enter the Church through the driveway immediately following the traffic light). Once in the main driveway, follow the signs to the upper parking lot. There is additional parking in the lower lot if needed.

Your significant other is invited. **Please RSVP by May 15, 2015** with the number of people who will be coming to our End of Year Social Dinner.

**RSVP by email to our Hospitality Chair, Morris Pelham at: [cmpelham@msn.com](mailto:cmpelham@msn.com)**



# Presentation: The Role for Mattes

By: Beth Koller

If you would like to improve your image presentation, you will need to consider the mattes that you use.

If you need a custom sized matte, you will need to cut it or have it cut for you. Remember, your image size and aspect ratio should fit the subject. A pre-cut matte will not do that for you.

If you need a bottom weighted matte to fit a frame or to provide balance to an image, you will need to cut it or have it cut for you.

The kind/color of paper on which your image is printed will also determine the type of matte you should select. Some of the white-white papers are not enhanced by creamy yellow or slightly grey mattes. By selecting a custom matte, you can explore entire gamuts for a) whites, b) greys, and c) blacks.

Mattes also differ in their degree of “archivalness”. Are you getting a matte paper that has been chemically buffered or coated on the outside with a veneer of archival paper? Or are you getting a

museum grade rag paper matte in which the inner core is the same material and color as the outside. On a non-archival black matte or a veneered archival black matte, the interior core that shows on the cut will be white and will yellow with age (depending on the degree of any buffering).

If you always print with the same paper, it may make sense to cut your own mattes. Otherwise it may make sense to have them custom cut for you. It is a bit more expensive (although some matte systems permit reuse) and requires some advance planning.

Bosco Zia, the owner of *American Art Make-A-Frame*, is trained as an artist AND enjoys working with artists. He will be able to educate you about what you are getting from various types of mattes—including how you might rig them for reusability.

American Art Make-A-Frame

[www.americanartmakeaframe.com/](http://www.americanartmakeaframe.com/)

11770 Parklawn Dr, Rockville, MD 20852



# The Homework Assignment

By: Lisa Kruppa

## What homework? We are all adults so how does this happen?

Well, let's rewind to the several presentations the club has hosted regarding lighting, posing models and portraiture. The outcome of these events was a few of us wanting to discover more and hone the technique for this skill. I decided the only way to learn something more was to actually do something. I already had some lights and a couple reflectors for tabletop photography. So all I needed were a couple of other people interested in this topic, some models and a little space.

The Five Star residence provided the space and models. Beth Koller, Saul Pleeter, and Rebecca Xia (non-member) stepped forward as wanting to learn more about portraiture.

The synergy for the learning event came together on March 14, 2015. We all met at 9 am to set up the backdrop and lights. I provided a brief overview of using a light meter. Beth and Saul demonstrated techniques for using the reflectors and posing our models. Rebecca was the assistant who did everything anyone could think of. At 10 am thirty-three residents were waiting in line to have their portrait taken.

When we wrapped up we all learned some more about putting on a portrait session. This could not have happened if we as a group had not shared our desire to challenge ourselves in new ways then

took the time to make it happen. Later, I provided our wonderful models with a courtesy print and digital image on a memory stick.



So the take away from this:

- There are some wonderfully talented people in our club.
- If you want to learn and share you can do it.
- Also you will never learn something new until you are prepared to challenge yourself.

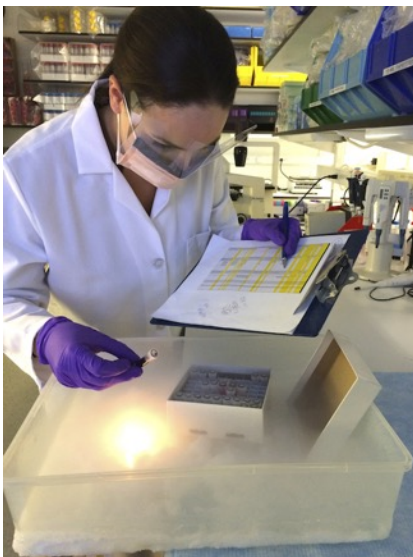




# In-Focus Safety Contest Winners



Two NIHCC members swept the competition held by The National Institutes of Health. Diane Poole and Dale Lewis were awarded plaques for their winning images in the 2014 In-Focus Photo Contest displaying safety in the work place. This contest was held by The Office of Research Services(ORS), Division of Occupational Health and Safety (DOHS).



*1st Place*  
**“Biospecimen Inventory”**  
By Diane Poole



*2nd Place*  
**“Hard Hat Safety”**  
By Diane Poole



*3rd Place*  
**“Firefighter”**  
By Dale Lewis

# Competition Winners - Geology

Member	Level	Medium Category	Title	Place
Norvell, John	Adv	B&W	Horseshoe Bend	1
Norvell, John	Adv	B&W	Antelope Canyon	2
Norvell, Kay	Nov	B&W	Navajo Sandstone	1
Smith, Dan	Nov	B&W	In the Narrows of the Paria River	2
Klosek, Gosia	Nov	B&W	Four Round Rocks	3
Norvell, John	Adv	Color	Navaho Hoodo	1
Collyer, Stan	Adv	Color	Iceland Sunset	2
Koller, Beth	Adv	Color	Crazy Quilt	3
Norvell, John	Adv	Color	Iceland Lava Fields	H
Eisenstadt, Linda	Nov	Color	Beauty of Yellowstone Canyon	1
Norvell, Kay	Nov	Color	Icelandic Thermal Basin	2
Norvell, Kay	Nov	Color	Icelandic Crater	3
Norvell, John	Adv	Digital	Zion Narrows	1
Norvell, John	Adv	Digital	Iceland Thermals	2
Koller, Beth	Adv	Digital	Scalloped Rock & Snow	3
Koller, Beth	Adv	Digital	Cloud in Spider Arch	H
Spellman, Gloria	Nov	Digital	Mammoth Hot Springs	1
Norvell, Kay	Nov	Digital	Lava Fields	2
Fisher, Quentin	Nov	Digital	Rocky Shore in Maui	3
Allin, Vickie	Nov	Digital	Otter Cliffs at Sunrise	H
Eisenstadt, Linda	Nov	Digital	Yellowstone Colors 2014	H
Norvell, Kay	Nov	Digital	Lower Antelope Canyon	H
Hogue, Sherry	Nov	Digital	The Scream	H
Tanaka, Chiyuki	Nov	Digital	Alaska	H

# Competition Winners - Geology

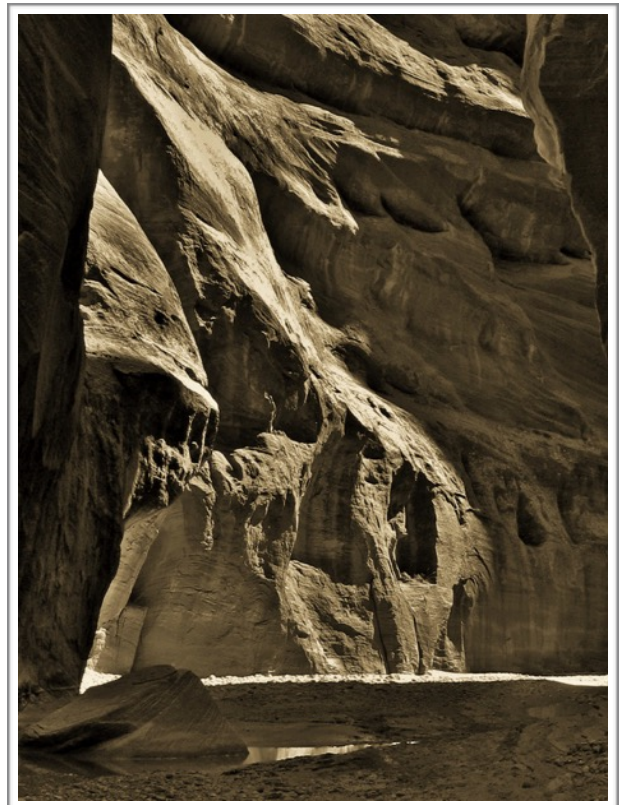


*1st Place Advanced Monochrome Print*  
**“Antelope Canyon” by John Norvell**

This image was captured in Antelope Canyon near Page, AZ last year on a photo tour of the SW canyons. A difficulty in making images there was in deciding how to frame the beautiful canyon walls in the photos, given the narrow passages and so many walls in beautiful and vivid reds, oranges, and yellows. The colors are spectacular, but I decided to print this one in B&W (perhaps inspired by a newspaper account of a recent sale of a B&W print of this canyon by an international photographer for several million dollars). While I don't expect to sell my version, it was fun to play with the contrasts in B&W. Nikon D610, 35mm, 2 sec., f/14, ISO200.

*2nd Place Novice Monochrome Print*  
**“Cell Block 15” by Daniel Smith**

All the watershed that can be seen at Bryce Canyon N.P. (and more) drains through the narrows of the Paria River – a slit many hundreds of feet deep and sometimes as narrow as twenty feet across. The river flows south and into the Colorado at Lee's Ferry. I took this image in 2008 -- shortly after I got my first digital camera, a Canon pocket point-and-shoot. Having no technical knowledge, the only photographer's skill I utilized was my eye. Later, I used “highlights” to reduce washout at the most exposed areas, increased the contrast a little, and converted the image to monochrome for this competition. Taken at 4 PM on an October day, it was a good time for contrast of light and shadow. 62mm, f/2.8, 1/400, ISO 80.





*3rd Place Novice Monochrome*

**"Four Round Rocks" by Gosia Klosek**

I took this picture in the early afternoon, (almost) full sun. Bright light brought out details of the grain structure of the rocks; shadows highlighted their smooth edges. These are just plain gray rocks you'll find on beaches. The picture was taken in color, but it was almost monochrome before I converted it to black and white as the rocks show a full range of grays from true black to true white. Before printing the image, I increased the contrast a little, slightly sharpened it, and cropped it to 8 x 10. Nikon, 50mm, f/8.0, 1/500, ISO100.

*2nd Place Advanced Color Print*

**"Iceland Sunset"**

**by Stan Collyer**



Finally! After two judges had rejected this entry I decided to give it one more try. The "defect": the sunburst effect looked artificial and was "obviously Photoshopped". Well it wasn't--it was simply my choice of a small aperture in order to accentuate the sun. The lesson: if you really like an image maybe you'll find a judge who does too. And if not, who cares? I chose the smallest possible aperture for the lens I was using, even though that can result in a somewhat softer image due to diffraction. One challenge when shooting toward the sun is the problem of lens flare. I did have a few flare spots but fortunately they were pretty easy to correct in Lightroom. This was a 3-image HDR composite shot at f/22, 25mm, ISO 100, with exposures of 1/4, 2, and 15 sec.



*1st Place Novice Color Print*  
**“Beauty of Yellowstone Canyon”**  
by Linda Eisenstadt

I took this photo in West Yellowstone at Lookout Point in the early morning light. It just looked like a painting to me. In post processing, I set my clarity to 30 and played with saturation and vibrance to bring out the highlights and shadows. After adjusting saturation and luminance, I used the graduated filter. I did some minor cropping at the top, to get rid of the trees above the rim. The last step I did was to again apply the graduated filter at the lower left hand corner. I felt the white was still too blown out. I was pleased with my last try. All of the above settings were very minor. The color, lighting and beauty of this view were all there. I worked hard to make sure this photo looked natural and not over processed. Nikon 7100, 26mm, f5.6, 1/500, ISO 100.



*2nd Place Novice Color Print*  
**“Icelandic Thermal Basin”** by Kay Norvell

I took several shots of a fumarole in the thermal basin we visited in northern Iceland. I prefer this one because I got rocks in the foreground. The steam also made an interesting pattern. Nikon D7100, 100mm, 1/250, f/14, ISO200.

## Competition Winners *cont.*

*2nd Place Advanced Digital*

### **"Iceland Thermals" by John Norvell**

I took this photo on our Icelandic photo trip. The strong winds never stopped and the land was covered with ice and snow, except in the thermal basins. The steam from the hot springs made for interesting patterns against the ice and rocks. I used Lightroom to bring out the texture of the stream bed and to darken the bright snow. Nikon D610, 30mm, 1/250, f/13, ISO400.



*3rd Place Advanced Digital*

### **"Scalloped Rock and Snow" by Beth Koller**

I took this photo in the southwest a few years ago, liking it very much. But I was not happy with the way I was able to post-process it at that time, I could not get the details in the snow as I remember seeing them. After getting new software, I was able to process the image to my liking. My point - go back to some of your older images, re-examine them and don't be afraid to try processing them with your updated software and new skills.



*Honorable Mention Advanced Digital*

### **"Cloud in Spider Arch" by Beth Koller**

Spider Arch in Monument Valley, AZ is not only beautiful to me but also to a lot of other people. I wanted to take the picture with no people in the frame. I also hoped the little white cloud in the sky would move into my frame. So while waiting, I took several shots using my wide angle lens trying different settings to determine the best. I was prepared. When the people moved on and a cloud moved in, I was able to get the image I had envisioned.





*1st Place Novice Digital*  
**"Mammoth Hot Springs"**  
by Gloria Spellman

I took this photo midday on a trip to Yellowstone Park last fall. The main decision I made was whether or not to use a fast or slow shutter to capture the falling water. In this photo, I decided to go fast (considering my focal length). Using a fast shutter speed produced frozen droplets whereas had I used a slower shutter speed, the water would have been rendered in a blurred soft effect. I also punched up the colors and clarity. Nikon 7100, 1/250, f/11.



*2nd Place Novice Digital*  
**"Lava Fields"** by Kay Norvell

This photo was taken in March in a large lava field covered with snow and taken into the sun. While I used a lens hood, I still got a lens flare near the sun's image as the reviewer pointed out. I especially liked how the strong wind had blown the snow into interesting patterns. Nikon D7100, 24mm, 1/200, ISO 200.



*3rd Place Novice Digital*  
**"Rocky Shore in Maui"**  
by Quentin Fisher

This was taken during a sunrise walk at Waianapanapa State Park on the Eastern coast of Maui. We especially enjoyed the backlighting through the waves splashing over the lava rocks (the rock on the lower right looks like a smiling teddy bear, arms folded above his potbelly!) Waianapanapa is well worth a visit if you are planning a Hawaii trip. The state park has furnished cabins right along the shore. I converted the image to B&W and boosted the contrast a little bit. Nikon D7100, 18-200 VR @48mm.

## Competition Winners *cont.*



*Honorable Mention Novice Digital*  
**"Otter Cliffs at Sunrise"**  
by Vickie Allin

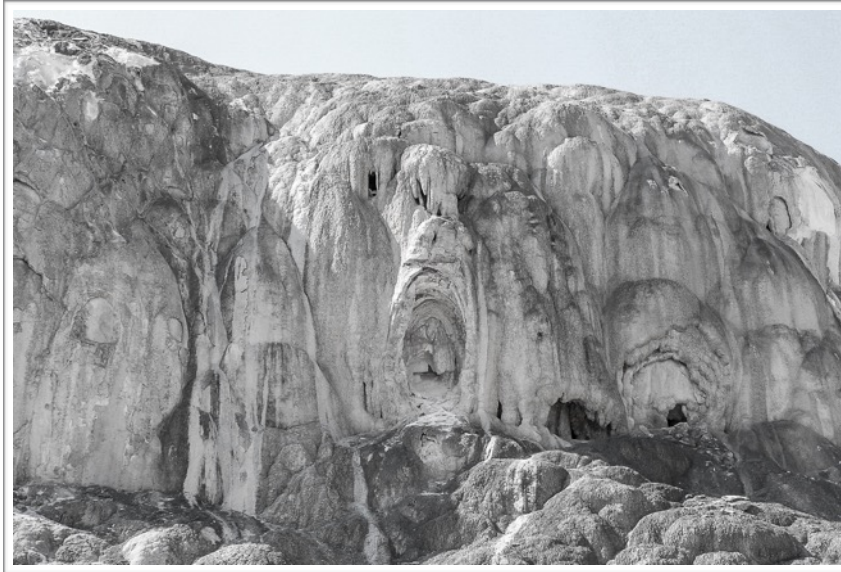
I took this picture while on a wonderful photo workshop in Acadia National Park last summer. The key ingredients in this photo are the beautiful light (we got up at 4:30 AM to catch the sunrise) and the striking subject. Taking the picture was the easy part. 37mm, f/11, 1/15 sec, ISO 100.



*Honorable Mention Novice Digital*  
**"Yellowstone Colors"**  
by Linda Eisenstadt

This photo was taken at the upper geyser basin in Yellowstone National Park. I loved the colors and the lines leading me towards the tree line as well as the steam which was caused by other geysers further away. I adjusted the exposure using the adjustment brush. I also tried to bring out the warm colors a tad. While my photograph shows the top of the tree, it may be too close to the upper edge of the frame. I didn't crop the photo and really didn't notice how close to the top the tree was. Before you take your picture, you have to keep checking all the way around to make sure you are giving every element enough space. So much to remember! Nikon 7100, 70 mm, f5.6, 1/500, ISO 500.





*Honorable Mention Novice Digital*  
**"The Scream" by Sherry Hogue**

I enjoy looking at other people's pictures. I also like to envision imaginary images in nature. So when I was researching my trip to Yellowstone National Park, I came across a similar picture. Since it met my interest in imaginary images, I was determined to find the location and take a photograph for myself. After trying both horizontal and vertical points of view, I settled for this one because I liked it the best. 14mm, F/4, 1/125, ISO 80.



*Honorable Mention Novice Digital*  
**"Alaska" by Chiyuki Tanaka**

I took this picture from the ship during my cruise to Alaska. The S curve of the glacier in the beautiful mountains caught my eye. Because the curve of the glacier was on the diagonal, it made an even more compelling shot. Diagonal lines are always pleasing to the eye. All I had to do in post process was to make some adjustments for exposure and saturation. Nikon D80, F11, 1/400, ISO 400.

# Travelogue



© Saul Pleeter

## Visiting Vietnam

### **A Travel Slide Show Not to be Missed**

Join local photographers Oksana Dukhanina and Saul Pleeter on their amazing journey to Vietnam. Highlights include a visit to the interior near Cambodia and Laos and a trip along the exotic coastline.

**Tuesday, May 19th at 8:00pm**

at the Premier Residence Community Room

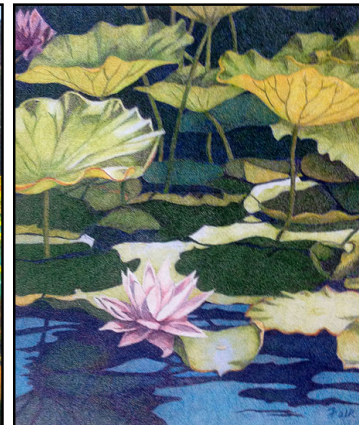
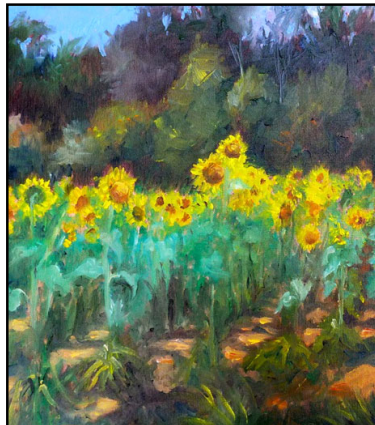
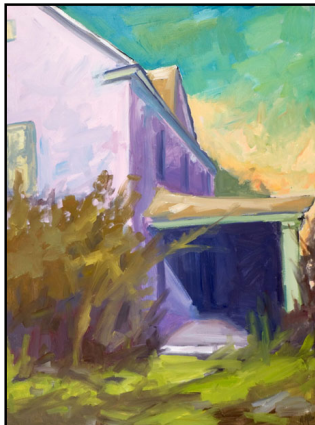
## NIH Camera Club



Several member artists of the Montgomery Art Association (MAA) have their work for display and sale at the **Amici Miei Ristorante**.

**Art will be on display April 12 through July 12, 2015**

**Artists Reception on Sunday, April 19 from 3:00 - 4:30 pm**



Kennedy Farm, Melissa Miller

Ukulele Love, D. Poole

Poolesville Sunflower Field #1, B. Mandel

Lotus II, Natalie Falk

**Featuring the art of:**

**Ken Backman** • [kbachman43@gmail.com](mailto:kbachman43@gmail.com)

**Natalie Falk** • [nmfalk@comcast.net](mailto:nmfalk@comcast.net)

**Barbara Mandel** • [artbarbm@gmail.com](mailto:artbarbm@gmail.com)

**Melissa Miller** • [melismill@yahoo.com](mailto:melismill@yahoo.com)

**Diane Poole** • [dianejpoole@gmail.com](mailto:dianejpoole@gmail.com)

Established in 1954, **MAA's** members are from the Washington area, including Maryland, Virginia, and the District. MAA sponsors art shows at venues such as Brookside Gardens, the Friendship Heights Village Center, and the Kensington Town Hall for an annual Labor Day Weekend "Paint the Town" Art Show. MAA also operates the MAA Gallery in Westfield Wheaton Mall, open daily (on upper level near Costco).

**Amici Miei Ristorante**

in Potomac Woods Plaza  
1093 Seven Locks Rd, Potomac, MD 20854  
301-545-0966

**Restaurant Hours**

Mon - Thur: 11:30 am – 9:00 pm  
Fri - Sat: 11:30 am – 10:00 pm  
Sun: 5:00 pm – 9:00 pm

[www.MontgomeryArt.org](http://www.MontgomeryArt.org)

Montgomery Art Association • P.O. Box 2154, Rockville, MD 20852

# Opportunities *cont.*

Upcoming

## 24<sup>th</sup> KEEP MONTGOMERY COUNTY BEAUTIFUL

By: Beth Koller

### *START PLANNING NOW! FIRST NOTICE.*

The Montgomery County Department of Transportation (MCDOT) and the Keep Montgomery County Beautiful



(KMCB) Task Force annually sponsor Beautification and Photography contests.

The Beautification Contest recognizes landscaping projects that enhance the appearance of commercial properties, residential properties, County median strips, County roadsides, or other public locations in the County. (Although this might not seem immediately germane, the featured locations can provide potential sites for photographers.)

The Photography Contest typically features five subject categories: *Montgomery County by Day*; *Montgomery County by Night*; *Montgomery County Landmarks*; *Montgomery County, Her People at Work* (and contributing to the beauty and/or livability of the County; not limited to County Employees); and *Montgomery County, Her*

*People* (participating in leisure activities, productive activities, and/or community service). There is an optional *Youth Category* for those under 18 years of age who wish to be judged against their peers.

The photography contest is limited to current residents of Montgomery County. Only one submission is permitted. (However, images that can qualify for this contest can also qualify for the category “Montgomery County” in the August Montgomery County Agricultural Fair.) An independent judge will assess the work on the basis of relevance of the subject matter, overall impact, composition, technique, and originality. (Think about locations other than Lower Montgomery County, the Potomac River, and the C&O Canal. Look at the lists of County Parks and County construction projects. Consider historic buildings—especially those scheduled for demolition or damaged by fire or other calamity.) Matted entries with specific size requirements are due mid-June, with the final date still to be determined. Model releases are needed if individuals can be recognized. More information and downloadable entry forms are available from the MCDOT website ([www.montgomerycountymd.gov/dot-dir/index.html](http://www.montgomerycountymd.gov/dot-dir/index.html)) or the Community Outreach Office (240-777-7155, [www.mcdot.outreach@montgomerycountymd.gov](mailto:www.mcdot.outreach@montgomerycountymd.gov)). A sample of a 2013 entry form ([www.montgomerycountymd.gov/dot-dir/Resources/Files/BAC/2013/2013%20Photography%20Contest.pdf](http://www.montgomerycountymd.gov/dot-dir/Resources/Files/BAC/2013/2013%20Photography%20Contest.pdf)) may be useful.

There is an awards banquet in October. All participants are invited and may bring a guest. Winners are notified that they have “placed” in the competition, but the final standings are announced at the banquet itself. The images are used in various public buildings such as libraries for the next several years and are then returned. The County benefits from having a large number of entries and the quality of the contest improves when skilled photographers, such as those in the Club, enter. The dinner also offers the opportunity to recruit new members.



## NATURE VISIONS PHOTO EXPO

<http://naturevisions.org>

November 13-15, 2015  
Hylton Performing Arts Center, Manassas, VA

The Nature Visions Expo is an exciting three day educational event held every year on George Mason University's campus and sponsored by area Camera Clubs including our club. It is open to the public and designed for photographers from beginners to professional.

Since NIHCC is a sponsoring club **YOU are encouraged to participate in the following:**

- Education - Attend lectures and workshops led by professional photographers (some fee based and some free)
- Public Exhibition - submit your images to a juried exhibition (some 300 out of 1000+ entries will be chosen, only members of sponsoring clubs can enter). You will be able to submit up to 8 images total, 6 in various nature categories (Macro, Water, Landscapes, Birds, Wildlife, Flora) and 2 in the Fine Arts category. Online submissions will begin in late August, so it's time to start thinking about your entries.
- Merchandise Sales - Pursue photography equipment, books, tours all at discounted prices.

More detailed information will be sent out shortly via our Google list. Please contact Jim Turner or Stan Collyer if you have any questions.



Nature Visions Photo Expo  
November 13-15, 2015  
Hylton Performing Arts Center  
Manassas, Virginia

## ***START COLLECTING YOUR IMAGES***

# Opportunities *cont.*



Acadia Images Photography Workshops

*Workshops offered April - November  
Book to suit your schedule.*



**Roy Sewall Photography**  
5619 Oak Place  
Bethesda, MD 20817  
[roy@sewallinc.com](mailto:roy@sewallinc.com)  
[www.roysewallphotography.com](http://www.roysewallphotography.com)



PSA Photographic Society of America

Home | About PSA | Volunteer | PSA International | Donate to PSA | Contact | FAQ | Search Site

Society Recognition Award Proposals due March 1, 2015

Membership | Member Areas | Divisions | Clubs/Councils | Chapters | Exhibitions | PSA Conference | Education

PSA Journal | Who's Who | Awards | Youth | PSA Galleries | PSA Collections | Competitions | Forms | Site Map

## 2015 PSA Annual Conference - Yellowstone National Park

The 77th PSA Conference has an exciting lineup of photo tours, workshops, programs, featured speakers, and social activities.

**DATES: Sunday, September 27 through Saturday, October 3, 2015**

**CONFERENCE HOTEL:**  
Holiday Inn West Yellowstone  
315 Yellowstone Avenue W.  
West Yellowstone, MT 59758

Use the "Conference Hotels" link under "More Information" or the "Hotels" link at the top of this page to find out what is available.



# Calendar of Monthly Meetings

Date		Location	Topic	Speaker
May 12	7 PM	Premier Residence	Competition Night Topic: <b>Open</b>	Marsha Liebl
May 19	8 PM	Premier Residence	Travelogue Topic: <b>Vietnam</b>	Saul Pleeter Oksana Dukhanina
June 9	7 PM	Cedar Lane Unitarian Universalist Church	Annual Social Dinner	Members

## NIH Camera Club Competition Topics

### May 12th – Open

Any subject that produces an interesting image. It could consist of people, places, or things. Here is a chance to include sunrises/sunsets, sports events, humorous moments, photojournalistic happenings, street market scenes, a gala celebration, abstracts, and nonrepresentational subjects and techniques.

### June 9th – Annual Social Dinner

Members' Best Shots of the Year - Members bring food, select, enter and vote for each of the best of two shots they competed during the year in Digital, Black and White, and Color Prints.

## For Sale

**I-Mac 27" 2.7 GHz i5 4 gig memory** (can be upgraded to 16 gig) \$1200

- Mid 2001 Mac running system 10.10 Yosemite
- Internal CD/DVD drive—which can be replaced with a CCD flash drive to accommodate a 2 drive system and add on an inexpensive external CD/DVD drive
- Microsoft Office installed
- System 10.10 requires recent Photoshop versions (although drive can be formatted to facilitate earlier versions)

**Canon 400 mm/F4.0, L DO Lens \$4500** Will consider negotiating.

- Supplementary internal circular polarizer
- Case
- Original box
- Mint condition
- Excellent for bird watching and other animal photography

Terry Popkin ([tjpopkin@mac.com](mailto:tjpopkin@mac.com));  
[terry@popkinphoto.com](mailto:terry@popkinphoto.com) or 301-742-3131

**The Arcade Florist Shop** (301) 933-3777 in the Glenmont Shopping Center (12345 Georgia Ave, Silver Spring, MD 20906 at the intersection of Randolph and Georgia near the eastern end of the Metro Red Line) will be going out of business due the retirement of the owners. They have lots of props, vases, baskets, small stands, plants, silk plants, etc. that can be used for still life photography. They would like these items to find a good home. **Prices will be more than reasonable.**

## CLUB OFFICERS and COMMITTEES

**President:** *Susanne Strickland-*  
[SandCStrick355@verizon.net](mailto:SandCStrick355@verizon.net)

**Vice President:** *Jordan Snyder-[josnyder@comcast.net](mailto:josnyder@comcast.net)*

**Secretary:** *Linda Eisenstadt-[linstadt@aol.com](mailto:linstadt@aol.com)*

**Treasurer:** *Stan Collyer-[sccollier@aol.com](mailto:sccollier@aol.com)*

**Past President:** *Dick Sprott-[sprottrichard@gmail.com](mailto:sprottrichard@gmail.com)*

**Program Chair:** *Suzanne Dater-[sdater@gmail.com](mailto:sdater@gmail.com)*

**Education Chair:** *Jim Turner-*  
[Jim\\_Turner\\_1945@yahoo.com](mailto:Jim_Turner_1945@yahoo.com)

**Field Trip Chair:** **Greg Holden-**  
[gholden@imagesunderfoot.com](mailto:gholden@imagesunderfoot.com)

**Digital Competitions:** *Yaakov Gridley-[gridleys@aol.com](mailto:gridleys@aol.com)*

**Hospitality Chair:** *Morris Pelham-[CMPelham@msn.com](mailto:CMPelham@msn.com)*

**Membership Coordinator:** *Margaret Sprott-*  
[margaret.sprott@gmail.com](mailto:margaret.sprott@gmail.com)

**Nominating Committee Chair:** *Beth Hunter-*  
[hunterbeth@comcast.net](mailto:hunterbeth@comcast.net)

**Outreach Coordinator:** *Betty Caldwell-*  
[bcaldwell202@gmail.com](mailto:bcaldwell202@gmail.com)

**PSA Rep:** *Dick Sprott-[sprottrichard@gmail.com](mailto:sprottrichard@gmail.com)*

**Nature Visions Rep:** *Jim Turner-*  
[Jim\\_Turner\\_1945@yahoo.com](mailto:Jim_Turner_1945@yahoo.com)

**Alternate:** *Stan Collyer-[sccollier@aol.com](mailto:sccollier@aol.com)*

**Newsletter Editors:**

**Content:** *Gary McDavid-[gmcdavid@verizon.net](mailto:gmcdavid@verizon.net)*

**Layout:** *Louise McLaughlin-[lou.mclaugh@gmail.com](mailto:lou.mclaugh@gmail.com)*

**Layout:** *Sherry Hogue-[sherryhogue@comcast.net](mailto:sherryhogue@comcast.net)*

**Webmaster:** *Emma Beatty Howells-[embt01@gmail.com](mailto:embt01@gmail.com)*

**Website Committee Chair:** *Saul Pleeter-[pleeters@gmail.com](mailto:pleeters@gmail.com)*

**Web Address:** <http://www.nihcameraclub.com>

This newsletter is published monthly by the National Institutes of Health Camera Club, Bethesda, MD. Submit items for publication to Gary McDavid at [gmcdavid@verizon.net](mailto:gmcdavid@verizon.net)

## How to Join the NIH Camera Club

Complete membership form (find on the web site and attached to each newsletter or pick up at a meeting). Please note that you must be a member to compete in the monthly competitions.

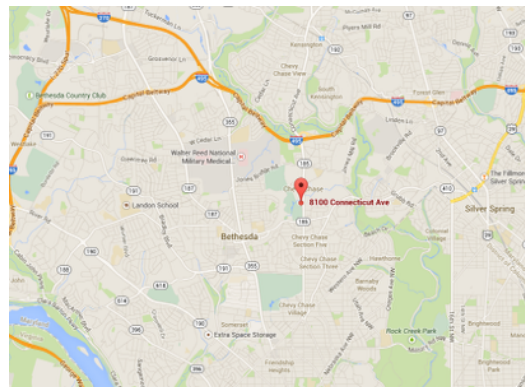
Mail membership form and check to the Treasurer: Stan Collyer 8817 Belmart Road Potomac, MD 20854 or submit at a regular meeting. **You do not have to work at NIH to join the club.**

## Meetings

### Location

### Five Star Premier Residences of Chevy Chase

8100 Connecticut Avenue  
Chevy Chase, MD 20815



Competition Night: Second Tuesday of the month  
Education Night: Fourth Tuesday of the month

## About the NIH Camera Club

The NIH Camera Club is sponsored by the Recreation and Welfare Association of the National Institutes of Health. Its purpose is to encourage its members to increase their knowledge, skills, and enjoyment of photography by holding meetings, classes, lectures, and demonstrations of the various phases of photography, and conducting workshops, photographic competitions, and other photography related activities. Membership is open to all, not just NIH employees.

Meetings are normally held on the second and fourth Tuesday of each month from September through June at 7:00 P.M. at the Five Star Premier Residences on Connecticut Avenue in Chevy Chase, MD, or the Cedar Lane Unitarian Universalist Church in Bethesda, MD.

© NIH Camera Club and its Contributors.

The contents of *Cameraderie* are copyrighted. No material herein may be reproduced in any manner without the written permission of the Editor or the material's author.



# MEMBERSHIP APPLICATION and RENEWAL FORM

## National Institutes of Health Recreation and Welfare Camera Club (NIHCC)

The NIH R&W Camera Club is sponsored by the NIH Recreation and Welfare (R&W) Association. Historically, the club's membership consisted of current and former NIH employees and their families. The club is now open to anyone who has an interest in photography. However, **all** members must belong to the NIH R&W. Camera club membership is renewable in September. R&W membership is renewable every January. The Treasurer collects Camera Club dues in September and, as a convenience to members, also collects the next year's R&W dues at the same time. The next year's R&W membership materials will then be distributed as soon as they are available.

DATE: \_\_\_\_\_

NAME: \_\_\_\_\_

HOME or WORK ADDRESS: \_\_\_\_\_

PHONE #: HOME \_\_\_\_\_ CELL \_\_\_\_\_ WORK \_\_\_\_\_

E-MAIL ADDRESS \_\_\_\_\_

Do you want to receive R&W notices by e-mail? Yes \_\_\_\_\_ No \_\_\_\_\_

\*\*\*\*\*

FEEES (please check the appropriate line(s):

\$ \_\_\_ Single membership: **\$31** + R&W membership (required): **\$9** = **\$40**

\$ \_\_\_ Single membership (already R&W member): **\$31** R&W number(s) \_\_\_\_\_

\$ \_\_\_ Family membership: **\$46** + R&W family membership (required): **\$9 each** (each family member must join)

Family members must live in same household      2 family members = **\$64**      3 family members = **\$73**

\$ \_\_\_ Newsletter mailing (*newsletter is normally sent by e-mail - pay this **only** if you also want it mailed*): **\$20**

TOTAL AMOUNT PAID \$ \_\_\_\_\_ Cash \_\_\_\_\_ Check # \_\_\_\_\_

\*\*\*\*\*

MAKE CHECKS PAYABLE TO: **NIH Camera Club**

SEND TO: Stan Collyer, Treasurer  
8817 Belmart Road  
Potomac, MD 20854  
H-301-299-6955  
Email: [sccollyer@aol.com](mailto:sccollyer@aol.com)

Please indicate how you paid on the line above. This membership form **must** be completed, signed, and submitted to the Treasurer every year.

\*\*\*\*\*

**Please indicate how you would like to be involved in NIH Camera Club activities:**

- \_\_\_ Help find program speakers/judges
- \_\_\_ Help publicize the Annual Open Competition
- \_\_\_ Help to welcome new members
- \_\_\_ Help with club exhibitions
- \_\_\_ Other \_\_\_\_\_
- \_\_\_ Assist with field trips or workshops
- \_\_\_ Assist with bi-annual and other social events
- \_\_\_ Help with club outreach activities

\*\*\*\*\*

### WAIVER

I hold the NIH Camera Club (NIHCC) and each member of NIHCC, individually and collectively, blameless for any injury that may occur to me or my guests, or my property while participating in any NIHCC activity or event.

\_\_\_\_\_  
Print Name

\_\_\_\_\_  
Signature

\_\_\_\_\_  
Date